



# FOLR3 Polyclonal Antibody

<b>Catalog No</b>	BYab-05589
<b>Isotype</b>	IgG
<b>Reactivity</b>	Human;Rat;Mouse;
<b>Applications</b>	WB;ELISA
<b>Gene Name</b>	FOLR3
<b>Protein Name</b>	Folate receptor gamma (FR-gamma) (Folate receptor 3)
<b>Immunogen</b>	Synthesized peptide derived from part region of human protein
<b>Specificity</b>	FOLR3 Polyclonal Antibody detects endogenous levels of protein.
<b>Formulation</b>	Liquid in PBS containing 50% glycerol, and 0.02% sodium azide.
<b>Source</b>	Polyclonal, Rabbit,IgG
<b>Purification</b>	The antibody was affinity-purified from rabbit antiserum by affinity-chromatography using epitope-specific immunogen.
<b>Dilution</b>	WB 1:500-2000 ELISA 1:5000-20000
<b>Concentration</b>	1 mg/ml
<b>Purity</b>	≥90%
<b>Storage Stability</b>	-20°C/1 year
<b>Synonyms</b>	
<b>Observed Band</b>	26kD
<b>Cell Pathway</b>	Secreted.
<b>Tissue Specificity</b>	Spleen, thymus, bone marrow, ovarian carcinoma, and uterine carcinoma.
<b>Function</b>	function: Binds to folate and reduced folic acid derivatives and mediates delivery of 5-methyltetrahydrofolate to the interior of cells. Isoform Short does not bind folate.,PTM: Eight disulfide bonds are present.,similarity: Belongs to the folate receptor family.,tissue specificity: Spleen, thymus, bone marrow, ovarian carcinoma, and uterine carcinoma.,
<b>Background</b>	This gene encodes a member of the folate receptor (FOLR) family of proteins, which have a high affinity for folic acid and for several reduced folic acid derivatives, and mediate delivery of 5-methyltetrahydrofolate to the interior of cells. Expression of this gene may be elevated in ovarian and primary peritoneal carcinoma. This gene is present in a gene cluster on chromosome 11. Alternative splicing results in multiple transcript variants. [provided by RefSeq, Dec 2015],

**Nanjing BYabscience technology Co.,Ltd**



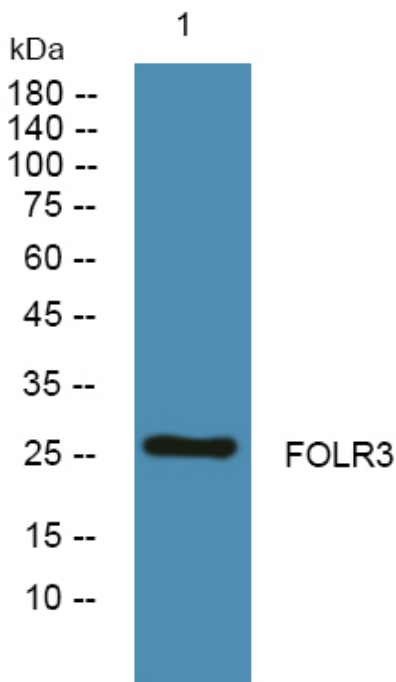
**matters needing attention**

Avoid repeated freezing and thawing!

**Usage suggestions**

This product can be used in immunological reaction related experiments. For more information, please consult technical personnel.

**Products Images**



Western blot analysis of lysates from K562 cells, primary antibody was diluted at 1:1000, 4° over night