



HMX2 Polyclonal Antibody

| | |
|--------------------|--|
| Catalog No | BYab-05647 |
| Isotype | IgG |
| Reactivity | Human;Mouse |
| Applications | WB;ELISA |
| Gene Name | HMX2 |
| Protein Name | Homeobox protein HMX2 (Homeobox protein H6 family member 2) |
| Immunogen | Synthesized peptide derived from part region of human protein |
| Specificity | HMX2 Polyclonal Antibody detects endogenous levels of protein. |
| Formulation | Liquid in PBS containing 50% glycerol, and 0.02% sodium azide. |
| Source | Polyclonal, Rabbit,IgG |
| Purification | The antibody was affinity-purified from rabbit antiserum by affinity-chromatography using epitope-specific immunogen. |
| Dilution | WB 1:500-2000 ELISA 1:5000-20000 |
| Concentration | 1 mg/ml |
| Purity | ≥90% |
| Storage Stability | -20°C/1 year |
| Synonyms | |
| Observed Band | 30kD |
| Cell Pathway | Nucleus . |
| Tissue Specificity | Testis, |
| Function | function:Transcription factor involved in specification of neuronal cell types and which is required for inner ear and hypothalamus development.,similarity:Belongs to the HMX homeobox family.,similarity:Contains 1 homeobox DNA-binding domain., |
| Background | The protein encoded by this gene is a member of the NKL homeobox family of transcription factors. Members in this family are of ancient origin and play an important role in organ development during embryogenesis. A related mouse protein plays a role in patterning of inner ear structures. In humans, variations in a region containing this gene have been associated with inner ear malformations, vestibular dysfunction, and hearing loss. [provided by RefSeq, Aug 2012], |

Nanjing BYabscience technology Co.,Ltd



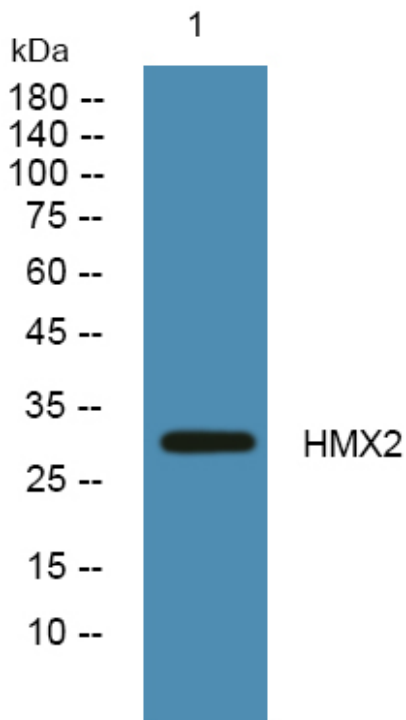
matters needing attention

Avoid repeated freezing and thawing!

Usage suggestions

This product can be used in immunological reaction related experiments. For more information, please consult technical personnel.

Products Images



Western blot analysis of lysates from K562 cells, primary antibody was diluted at 1:1000, 4° over night