



PGRC1 Polyclonal Antibody

Catalog No	BYab-05726
Isotype	IgG
Reactivity	Human;Rat;Mouse
Applications	WB;ELISA
Gene Name	PGRMC1 HPR6.6 PGRMC
Protein Name	Membrane-associated progesterone receptor component 1 (mPR)
Immunogen	Synthesized peptide derived from human protein . at AA range: 20-100
Specificity	PGRC1 Polyclonal Antibody detects endogenous levels of protein.
Formulation	Liquid in PBS containing 50% glycerol, and 0.02% sodium azide.
Source	Polyclonal, Rabbit,IgG
Purification	The antibody was affinity-purified from rabbit antiserum by affinity-chromatography using epitope-specific immunogen.
Dilution	WB 1:500-2000 ELISA 1:5000-20000
Concentration	1 mg/ml
Purity	≥90%
Storage Stability	-20°C/1 year
Synonyms	
Observed Band	21kD
Cell Pathway	Microsome membrane ; Single-pass membrane protein . Smooth endoplasmic reticulum membrane ; Single-pass membrane protein . Mitochondrion outer membrane ; Single-pass membrane protein ; Extracellular side .
Tissue Specificity	Widely expressed, with highest expression in liver and kidney. Expressed by endometrial glands and stroma (at protein level) (PubMed:23793472).
Function	domain:The cytochrome b5 heme-binding domain lacks the conserved iron-binding His residues at positions 107 and 131.,function:Receptor for progesterone.,similarity:Belongs to the cytochrome b5 family. MAPR subfamily.,similarity:Contains 1 cytochrome b5 heme-binding domain.,tissue specificity:Widely expressed, with highest expression in liver and kidney.,
Background	This gene encodes a putative membrane-associated progesterone steroid receptor. The protein is expressed predominantly in the liver and kidney. [provided by RefSeq, Mar 2010],

Nanjing BYabscience technology Co.,Ltd



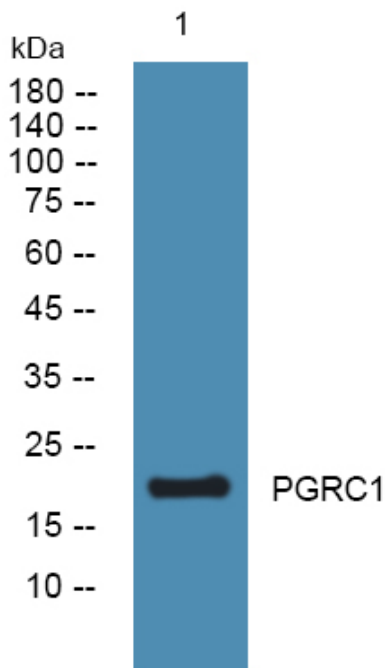
matters needing attention

Avoid repeated freezing and thawing!

Usage suggestions

This product can be used in immunological reaction related experiments. For more information, please consult technical personnel.

Products Images



Western blot analysis of lysates from U2OS cells, primary antibody was diluted at 1:1000, 4° over night