



M1IP1 Polyclonal Antibody

Catalog No	BYab-05730
Isotype	IgG
Reactivity	Human;Mouse;Rat
Applications	WB;ELISA
Gene Name	MID1IP1 MIG12
Protein Name	Mid1-interacting protein 1 (Gastrulation-specific G12-like protein) (Mid1-interacting G12-like protein) (Protein STRAIT11499) (Spot 14-related protein) (S14R) (Spot 14-R)
Immunogen	Synthesized peptide derived from human protein . at AA range: 90-170
Specificity	M1IP1 Polyclonal Antibody detects endogenous levels of protein.
Formulation	Liquid in PBS containing 50% glycerol, and 0.02% sodium azide.
Source	Polyclonal, Rabbit,IgG
Purification	The antibody was affinity-purified from rabbit antiserum by affinity-chromatography using epitope-specific immunogen.
Dilution	WB 1:500-2000 ELISA 1:5000-20000
Concentration	1 mg/ml
Purity	≥90%
Storage Stability	-20°C/1 year
Synonyms	
Observed Band	20kD
Cell Pathway	Nucleus . Cytoplasm . Cytoplasm, cytoskeleton . Associated with microtubules. .
Tissue Specificity	Lymph,Placenta,Skeletal muscle,
Function	caution:It is uncertain whether Met-1 or Met-2 is the initiator.,function:Involved in stabilization of microtubules.,similarity:Belongs to the SPOT14 family.,subcellular location:Associated with microtubules.,
Background	caution:It is uncertain whether Met-1 or Met-2 is the initiator.,function:Involved in stabilization of microtubules.,similarity:Belongs to the SPOT14 family.,subcellular location:Associated with microtubules.,
matters needing attention	Avoid repeated freezing and thawing!

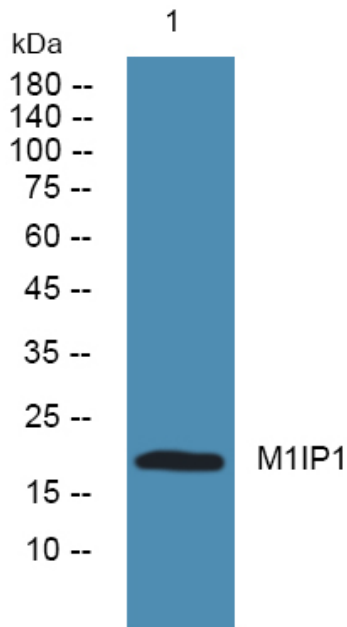
Nanjing BYabscience technology Co.,Ltd



Usage suggestions

This product can be used in immunological reaction related experiments. For more information, please consult technical personnel.

Products Images



Western blot analysis of lysates from K562 cells, primary antibody was diluted at 1:1000, 4° over night