



# MPP8 Polyclonal Antibody

Catalog No	BYab-05749
Isotype	IgG
Reactivity	Human;Rat;Mouse
Applications	WB;ELISA
Gene Name	MPHOSPH8 MPP8
Protein Name	M-phase phosphoprotein 8 (Two hybrid-associated protein 3 with RanBPM) (Twa3)
Immunogen	Synthesized peptide derived from human protein . at AA range: 290-370
Specificity	MPP8 Polyclonal Antibody detects endogenous levels of protein.
Formulation	Liquid in PBS containing 50% glycerol, and 0.02% sodium azide.
Source	Polyclonal, Rabbit,IgG
Purification	The antibody was affinity-purified from rabbit antiserum by affinity-chromatography using epitope-specific immunogen.
Dilution	WB 1:500-2000 ELISA 1:5000-20000
Concentration	1 mg/ml
Purity	≥90%
Storage Stability	-20°C/1 year
Synonyms	
Observed Band	94kD
Cell Pathway	Nucleus . Chromosome . Detected on heterochromatin (PubMed:20871592, PubMed:26022416). Dissociates from chromatin during interphase and early mitosis (PubMed:23416073). Detected on nucleosomes (PubMed:20871592). .
Tissue Specificity	Epithelium,Liver,Lymph node,Lymphoblast,Pancreas,PNS,
Function	PTM:Phosphorylated in M (mitotic) phase.,similarity:Contains 1 chromo domain.,similarity:Contains 4 ANK repeats.,
Background	PTM:Phosphorylated in M (mitotic) phase.,similarity:Contains 1 chromo domain.,similarity:Contains 4 ANK repeats.,
matters needing attention	Avoid repeated freezing and thawing!

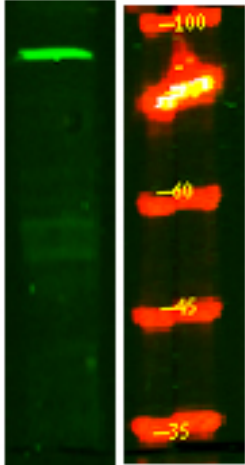
Nanjing BYabscience technology Co.,Ltd



## Usage suggestions

This product can be used in immunological reaction related experiments. For more information, please consult technical personnel.

## Products Images



Western Blot analysis of Hela lysis, using primary antibody at 1:1000 dilution. Secondary antibody(catalog#:RS23920) was diluted at 1:10000