



# MUC15 Polyclonal Antibody

Catalog No	BYab-05751
Isotype	IgG
Reactivity	Human;Mouse
Applications	WB;ELISA
Gene Name	MUC15 UNQ750/PRO1481
Protein Name	Mucin-15 (MUC-15)
Immunogen	Synthesized peptide derived from human protein . at AA range: 180-260
Specificity	MUC15 Polyclonal Antibody detects endogenous levels of protein.
Formulation	Liquid in PBS containing 50% glycerol, and 0.02% sodium azide.
Source	Polyclonal, Rabbit,IgG
Purification	The antibody was affinity-purified from rabbit antiserum by affinity-chromatography using epitope-specific immunogen.
Dilution	WB 1:500-2000 ELISA 1:5000-20000
Concentration	1 mg/ml
Purity	≥90%
Storage Stability	-20°C/1 year
Synonyms	
Observed Band	36kD
Cell Pathway	[Isoform 1]: Cell membrane ; Single-pass type I membrane protein .; [Isoform 2]: Secreted .
Tissue Specificity	Expressed in spleen, thymus, prostate, testis, ovary, small intestine, colon, peripheral blood leukocyte, bone marrow, lymph node and lung.
Function	function:May play a role in the cell adhesion to the extracellular matrix.,PTM:Highly glycosylated (N- and O-linked carbohydrates).,sequence caution:Translated as stop.,tissue specificity:Expressed in spleen, thymus, prostate, testis, ovary, small intestine, colon, peripheral blood leukocyte, bone marrow, lymph node and lung.,
Background	function:May play a role in the cell adhesion to the extracellular matrix.,PTM:Highly glycosylated (N- and O-linked carbohydrates).,sequence caution:Translated as stop.,tissue specificity:Expressed in spleen, thymus, prostate, testis, ovary, small intestine, colon, peripheral blood leukocyte, bone marrow, lymph node and lung.,

Nanjing BYabscience technology Co.,Ltd



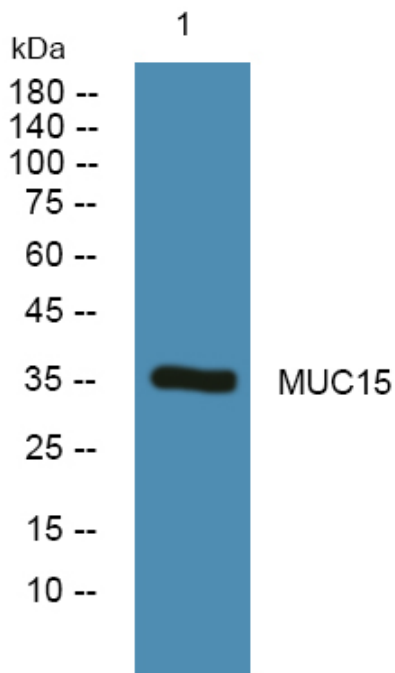
**matters needing attention**

Avoid repeated freezing and thawing!

**Usage suggestions**

This product can be used in immunological reaction related experiments. For more information, please consult technical personnel.

**Products Images**



Western blot analysis of lysates from U2OS cells, primary antibody was diluted at 1:1000, 4° over night