



MRP6 Polyclonal Antibody

Catalog No	BYab-05760
Isotype	IgG
Reactivity	Human;Rat;Mouse
Applications	WB;ELISA
Gene Name	ABCC6 ARA MRP6
Protein Name	Multidrug resistance-associated protein 6 (ATP-binding cassette sub-family C member 6) (Anthracycline resistance-associated protein) (Multi-specific organic anion transporter E) (MOAT-E)
Immunogen	Synthesized peptide derived from human protein . at AA range: 290-370
Specificity	MRP6 Polyclonal Antibody detects endogenous levels of protein.
Formulation	Liquid in PBS containing 50% glycerol, and 0.02% sodium azide.
Source	Polyclonal, Rabbit,IgG
Purification	The antibody was affinity-purified from rabbit antiserum by affinity-chromatography using epitope-specific immunogen.
Dilution	WB 1:500-2000 ELISA 1:5000-20000
Concentration	1 mg/ml
Purity	≥90%
Storage Stability	-20°C/1 year
Synonyms	
Observed Band	165kD
Cell Pathway	[Isoform 1]: Basolateral cell membrane ; Multi-pass membrane protein .; [Isoform 2]: Endoplasmic reticulum membrane ; Single-pass membrane protein .
Tissue Specificity	Expressed in kidney and liver. Very low expression in other tissues.
Function	disease:Defects in ABCC6 are the cause of pseudoxanthoma elasticum (PXE) [MIM:264800]. PXE is a disorder characterized by calcification of elastic fibers in skin, arteries and retina that results in dermal lesions with associated laxity and loss of elasticity, arterial insufficiency and retinal hemorrhages leading to macular degeneration. PXE is caused in the overwhelming majority of cases by homozygous or compound heterozygous mutations in the ABCC6 gene (autosomal recessive PXE). Individuals carrying heterozygous mutations express limited manifestations of the pseudoxanthoma elasticum phenotype (autosomal dominant PXE).function:May participate directly in the active transport of drugs into subcellular organelles or influence drug distribution indirectly. Transports

Nanjing BYabscience technology Co.,Ltd



glutathione conjugates as leukotriene-c4 (LTC4) and N-ethylmaleimide S-glutathione (NEM-GS).,online information:Retina In

Background

The protein encoded by this gene is a member of the superfamily of ATP-binding cassette (ABC) transporters. ABC proteins transport various molecules across extra- and intra-cellular membranes. ABC genes are divided into seven distinct subfamilies (ABC1, MDR/TAP, MRP, ALD, OABP, GCN20, White). The encoded protein, a member of the MRP subfamily, is involved in multi-drug resistance. Mutations in this gene cause pseudoxanthoma elasticum. Alternatively spliced transcript variants that encode different proteins have been described for this gene. [provided by RefSeq, Jul 2008],

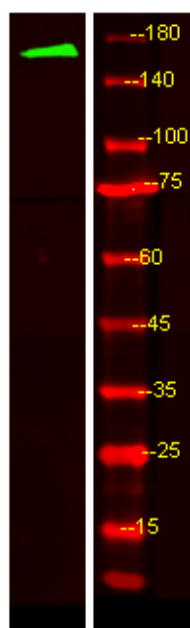
matters needing attention

Avoid repeated freezing and thawing!

Usage suggestions

This product can be used in immunological reaction related experiments. For more information, please consult technical personnel.

Products Images



Western Blot analysis of HEK293 lysis, using primary antibody at 1:1000 dilution. Secondary antibody(catalog#:RS23920) was diluted at 1:10000