



MY18B Polyclonal Antibody

Catalog No	BYab-05786
Isotype	IgG
Reactivity	Human;Rat;Mouse;
Applications	IHC;IF
Gene Name	MYO18B
Protein Name	Unconventional myosin-XVIIIb
Immunogen	Synthesized peptide derived from human protein . at AA range: 1680-1760
Specificity	MY18B Polyclonal Antibody detects endogenous levels of protein.
Formulation	Liquid in PBS containing 50% glycerol, and 0.02% sodium azide.
Source	Polyclonal, Rabbit,IgG
Purification	The antibody was affinity-purified from rabbit antiserum by affinity-chromatography using epitope-specific immunogen.
Dilution	IHC-p 1:50-300. IF 1:50-200
Concentration	1 mg/ml
Purity	≥90%
Storage Stability	-20°C/1 year
Synonyms	
Observed Band	282kD
Cell Pathway	Cytoplasm. Nucleus. Cytoplasm, myofibril, sarcomere. Punctate pattern in undifferentiated myoblasts. Nuclear, on primary cardiomyocytes and adult muscle. A partial sarcomeric location was found in some cardiomyocytes.
Tissue Specificity	Selectively expressed in cardiac and skeletal muscles. Weakly expressed in testis, pancreas, placenta, prostate, lung and thymus.
Function	developmental stage:Reaches an expression peak in the third day after induction and remains at similar level during successive myotubule maturation.,disease:Defects in MYO18B are associated with lung cancer. Inactivated in half of the primary lung cancers and cell lines; the causes include deletions, mutations and promoter methylation.,function:May be involved in intracellular trafficking of the muscle cell when in the cytoplasm, whereas entering the nucleus, may be involved in the regulation of muscle specific genes. May play an important role as a tumor suppressor in the development of lung cancer.,similarity:Contains 1 IQ domain.,similarity:Contains 1 myosin head-like domain.,subcellular location:Punctate pattern in undifferentiated myoblasts.

Nanjing BYabscience technology Co.,Ltd



Nuclear, on primary cardiomyocytes and adult muscle. A partial sarcomeric location was found in some cardiomyocytes.,subunit:Homodimer. May int

Background

The protein encoded by this gene may regulate muscle-specific genes when in the nucleus and may influence intracellular trafficking when in the cytoplasm. The encoded protein functions as a homodimer and may interact with F actin. Mutations in this gene are associated with lung cancer. [provided by RefSeq, Jul 2008],

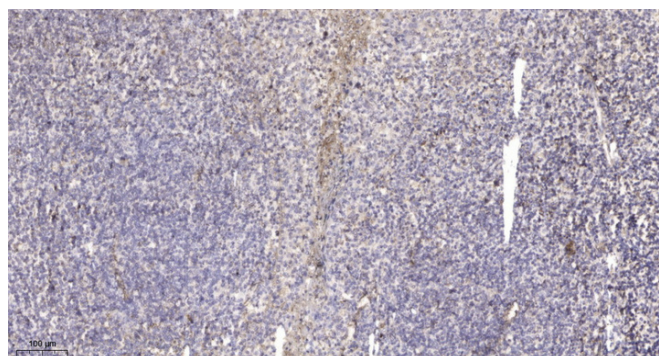
matters needing attention

Avoid repeated freezing and thawing!

Usage suggestions

This product can be used in immunological reaction related experiments. For more information, please consult technical personnel.

Products Images



Immunohistochemical analysis of paraffin-embedded human tonsil. 1, Antibody was diluted at 1:200(4° overnight). 2, Tris-EDTA,pH9.0 was used for antigen retrieval. 3,Secondary antibody was diluted at 1:200(room temperature, 45min).