



NDUB7 Polyclonal Antibody

Catalog No	BYab-05802
Isotype	IgG
Reactivity	Human;Mouse
Applications	WB;ELISA
Gene Name	NDUFB7
Protein Name	NADH dehydrogenase [ubiquinone] 1 beta subcomplex subunit 7 (Cell adhesion protein SQM1) (Complex I-B18) (CI-B18) (NADH-ubiquinone oxidoreductase B18 subunit)
Immunogen	Synthesized peptide derived from human protein . at AA range: 20-100
Specificity	NDUB7 Polyclonal Antibody detects endogenous levels of protein.
Formulation	Liquid in PBS containing 50% glycerol, and 0.02% sodium azide.
Source	Polyclonal, Rabbit,IgG
Purification	The antibody was affinity-purified from rabbit antiserum by affinity-chromatography using epitope-specific immunogen.
Dilution	WB 1:500-2000 ELISA 1:5000-20000
Concentration	1 mg/ml
Purity	≥90%
Storage Stability	-20°C/1 year
Synonyms	
Observed Band	15kD
Cell Pathway	Mitochondrion inner membrane ; Peripheral membrane protein . Mitochondrion intermembrane space .
Tissue Specificity	Hypothalamus,Ovary,
Function	function:Accessory subunit of the mitochondrial membrane respiratory chain NADH dehydrogenase (Complex I), that is believed to be not involved in catalysis. Complex I functions in the transfer of electrons from NADH to the respiratory chain. The immediate electron acceptor for the enzyme is believed to be ubiquinone.,similarity:Belongs to the complex I NDUFB7 subunit family.,subunit:Complex I is composed of 45 different subunits.,
Background	The protein encoded by this gene is a subunit of the multisubunit NADH:ubiquinone oxidoreductase (complex I). Mammalian complex I is composed of 45 different subunits. It is located at the mitochondrial inner membrane. This protein has NADH dehydrogenase activity and oxidoreductase

Nanjing BYabscience technology Co.,Ltd



activity. It transfers electrons from NADH to the respiratory chain. The immediate electron acceptor for the enzyme is believed to be ubiquinone. [provided by RefSeq, Jul 2008],

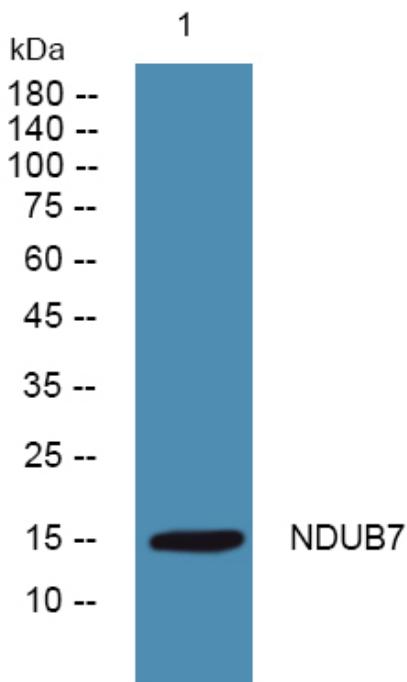
matters needing attention

Avoid repeated freezing and thawing!

Usage suggestions

This product can be used in immunological reaction related experiments. For more information, please consult technical personnel.

Products Images



Western blot analysis of lysates from PC12 cells, primary antibody was diluted at 1:1000, 4° over night