



KCNKG Polyclonal Antibody

Catalog No	BYab-05947
Isotype	IgG
Reactivity	Human;Rat;Mouse;
Applications	WB;ELISA
Gene Name	KCNK16 TALK1
Protein Name	Potassium channel subfamily K member 16 (2P domain potassium channel Talk-1) (TWIK-related alkaline pH-activated K(+) channel 1) (TALK-1)
Immunogen	Synthesized peptide derived from human protein . at AA range: 230-310
Specificity	KCNKG Polyclonal Antibody detects endogenous levels of protein.
Formulation	Liquid in PBS containing 50% glycerol, and 0.02% sodium azide.
Source	Polyclonal, Rabbit,IgG
Purification	The antibody was affinity-purified from rabbit antiserum by affinity-chromatography using epitope-specific immunogen.
Dilution	WB 1:500-2000 ELISA 1:5000-20000
Concentration	1 mg/ml
Purity	≥90%
Storage Stability	-20°C/1 year
Synonyms	
Observed Band	33kD
Cell Pathway	Membrane; Multi-pass membrane protein.
Tissue Specificity	Highly expressed in pancreas. Not detectable in the other tissues tested.
Function	function:Outward rectifying potassium channel. Produces rapidly activating and non-inactivating outward rectifier K(+) currents.,miscellaneous:Inhibited by Ba(2+), quinine, quinidine, chloroform and halothane. Activated at alkaline pH.,similarity:Belongs to the two pore domain potassium channel (TC 1.A.1.8) family.,subunit:Homodimer .,tissue specificity:Highly expressed in pancreas. Not detectable in the other tissues tested.,
Background	potassium two pore domain channel subfamily K member 16(KCNK16) Homo sapiens The protein encoded by this gene belongs to the family of potassium channel proteins containing two pore-forming P domains. This channel is an open rectifier which primarily passes outward current under physiological K+ concentrations. This gene is expressed predominantly in the pancreas and is

Nanjing BYabscience technology Co.,Ltd



activated at alkaline pH. Several alternatively spliced transcript variants encoding different isoforms have been identified for this gene. [provided by RefSeq, Sep 2008],

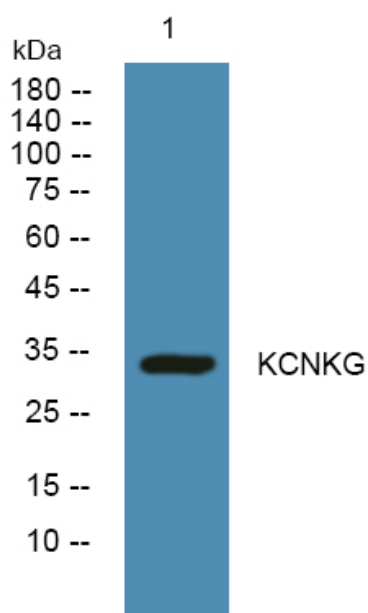
matters needing attention

Avoid repeated freezing and thawing!

Usage suggestions

This product can be used in immunological reaction related experiments. For more information, please consult technical personnel.

Products Images



Western blot analysis of lysates from DU145 cells, primary antibody was diluted at 1:1000, 4° over night