



# RGS4 Polyclonal Antibody

Catalog No	BYab-06076
Isotype	IgG
Reactivity	Human;Mouse;Rat
Applications	WB;ELISA
Gene Name	RGS4
Protein Name	Regulator of G-protein signaling 4 (RGP4) (RGS4)
Immunogen	Synthesized peptide derived from human protein . at AA range: 80-160
Specificity	RGS4 Polyclonal Antibody detects endogenous levels of protein.
Formulation	Liquid in PBS containing 50% glycerol, and 0.02% sodium azide.
Source	Polyclonal, Rabbit,IgG
Purification	The antibody was affinity-purified from rabbit antiserum by affinity-chromatography using epitope-specific immunogen.
Dilution	WB 1:500-2000 ELISA 1:5000-20000
Concentration	1 mg/ml
Purity	≥90%
Storage Stability	-20°C/1 year
Synonyms	
Observed Band	22kD
Cell Pathway	nucleus,cytoplasm,cytosol,plasma membrane,protein complex,
Tissue Specificity	Expressed in brain and heart. Expressed in brain at protein level. Expressed in prefrontal and visual cortex. Isoform 4 and isoform 5 are expressed ubiquitously. Isoform 1, isoform 2 and isoform 3 are not expressed in the cerebellum.
Function	disease:Genetic variation in RGS4 may be associated with susceptibility to schizophrenia 9 (SCZD9) [MIM:604906]. Schizophrenia [MIM:181500] is a psychosis, a disorder of thought and sense of self. Although it affects emotions, it is distinguished from mood disorders in which such disturbances are primary. Similarly, there may be mild impairment of cognitive function, and it is distinguished from the dementias in which disturbed cognitive function is considered primary. No objective biological test for schizophrenia exists. Schizophrenia is a common disorder with a lifetime prevalence of approximately 1%. It is highly heritable but the genetics are complex.,function:Inhibits signal transduction by increasing the GTPase activity of G protein alpha subunits thereby driving them into their inactive GDP-bound form. Activity on G(z)-alpha is

Nanjing BYabscience technology Co.,Ltd



inhibited by phosphorylation of the G-protein. Activ

## Background

Regulator of G protein signaling (RGS) family members are regulatory molecules that act as GTPase activating proteins (GAPs) for G alpha subunits of heterotrimeric G proteins. RGS proteins are able to deactivate G protein subunits of the Gi alpha, Go alpha and Gq alpha subtypes. They drive G proteins into their inactive GDP-bound forms. Regulator of G protein signaling 4 belongs to this family. All RGS proteins share a conserved 120-amino acid sequence termed the RGS domain. Regulator of G protein signaling 4 protein is 37% identical to RGS1 and 97% identical to rat Rgs4. This protein negatively regulate signaling upstream or at the level of the heterotrimeric G protein and is localized in the cytoplasm. Alternatively spliced transcript variants have been found for this gene. [provided by RefSeq, Jul 2008],

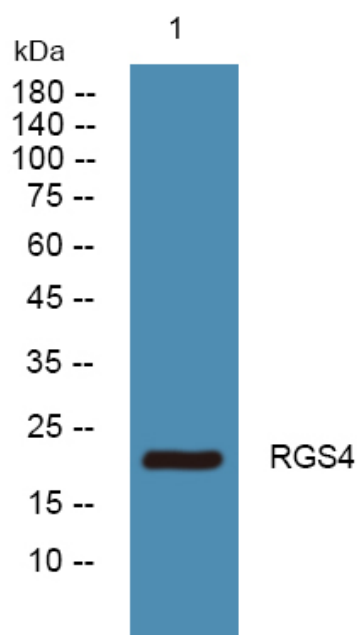
## matters needing attention

Avoid repeated freezing and thawing!

## Usage suggestions

This product can be used in immunological reaction related experiments. For more information, please consult technical personnel.

## Products Images



Western blot analysis of lysates from HCT116 cells, primary antibody was diluted at 1:1000, 4° over night

Nanjing BYabs science technology Co.,Ltd

网址: [www.njbybio.com](http://www.njbybio.com)

官方热线: 025-5229-8998

监督电话: 15950492658