



SFRP3 Polyclonal Antibody

Catalog No	BYab-06120
Isotype	IgG
Reactivity	Human;Mouse
Applications	WB;IHC;IF;ELISA
Gene Name	FRZB FIZ FRE FRP FRZB1 SFRP3
Protein Name	Secreted frizzled-related protein 3 (sFRP-3) (Frezzed) (Fritz) (Frizzled-related protein 1) (FrzB-1)
Immunogen	Synthesized peptide derived from human protein . at AA range: 150-230
Specificity	SFRP3 Polyclonal Antibody detects endogenous levels of protein.
Formulation	Liquid in PBS containing 50% glycerol, and 0.02% sodium azide.
Source	Polyclonal, Rabbit,IgG
Purification	The antibody was affinity-purified from rabbit antiserum by affinity-chromatography using epitope-specific immunogen.
Dilution	WB: 1/500 - 1/2000. IHC: 1/100 - 1/300. ELISA: 1/40000.. IF 1:50-200
Concentration	1 mg/ml
Purity	≥90%
Storage Stability	-20°C/1 year
Synonyms	
Observed Band	35kD
Cell Pathway	Secreted .
Tissue Specificity	Expressed primarily in the cartilaginous cores of the long bone during embryonic and fetal development and in the appendicular skeleton (6-13 weeks). At 13 weeks of gestation, transcripts were present in early chondroblasts of the tarsal bones of the foot, the carpal bones of the hands and the epiphysis of long bones. Highly expressed in placenta and heart, followed by brain, skeletal muscle, kidney and pancreas. Weakly expressed in lung and liver.
Function	disease:Defects in FRZB are associated with female-specific osteoarthritis (OA) susceptibility [MIM:165720]. It is the most prevalent form of arthritis and a common cause of disability.,domain:The FZ domain is involved in binding with Wnt ligands.,function:Soluble frizzled-related proteins (sFRPS) function as modulators of Wnt signaling through direct interaction with Wnts. They have a role in regulating cell growth and differentiation in specific cell types. SFRP3/FRZB appears to be involved in limb skeletogenesis. Antagonist of Wnt8 signaling.

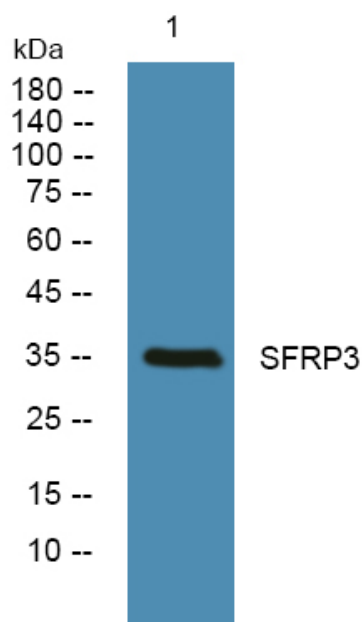
Nanjing BYabs science technology Co.,Ltd



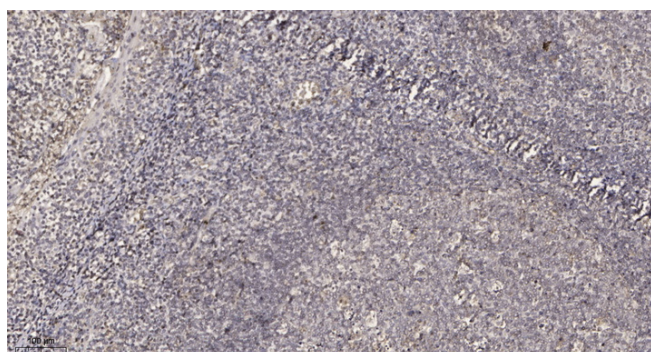
	Regulates chondrocyte maturation and long bone development.,similarity:Belongs to the secreted frizzled-related protein (sFRP) family.,similarity:Contains 1 FZ (frizzled) domain.,similarity:Contains 1 NTR domain.,tissue specificity:Expressed primarily in the cartilagenous cores of the long bone during embryonic and fetal development and in the ap
Background	The protein encoded by this gene is a secreted protein that is involved in the regulation of bone development. Defects in this gene are a cause of female-specific osteoarthritis (OA) susceptibility. [provided by RefSeq, Apr 2010],
matters needing attention	Avoid repeated freezing and thawing!
Usage suggestions	This product can be used in immunological reaction related experiments. For more information, please consult technical personnel.



Products Images



Western blot analysis of lysates from K562 cells, primary antibody was diluted at 1:1000, 4° over night



Immunohistochemical analysis of paraffin-embedded human tonsil. 1, Antibody was diluted at 1:200(4° overnight). 2, Tris-EDTA, pH9.0 was used for antigen retrieval. 3, Secondary antibody was diluted at 1:200(room temperature, 30min).