



PTPA Polyclonal Antibody

Catalog No	BYab-06150
Isotype	IgG
Reactivity	Human;Mouse
Applications	WB;ELISA
Gene Name	PPP2R4 PTPA
Protein Name	Serine/threonine-protein phosphatase 2A activator (EC 5.2.1.8) (PP2A, subunit B', PR53 isoform) (Phosphotyrosyl phosphatase activator) (PTPA) (Serine/threonine-protein phosphatase 2A regulatory subunit)
Immunogen	Synthesized peptide derived from part region of human protein
Specificity	PTPA Polyclonal Antibody detects endogenous levels of protein.
Formulation	Liquid in PBS containing 50% glycerol, and 0.02% sodium azide.
Source	Polyclonal, Rabbit,IgG
Purification	The antibody was affinity-purified from rabbit antiserum by affinity-chromatography using epitope-specific immunogen.
Dilution	WB 1:500-2000 ELISA 1:5000-20000
Concentration	1 mg/ml
Purity	≥90%
Storage Stability	-20°C/1 year
Synonyms	
Observed Band	39kD
Cell Pathway	Cytoplasm . Nucleus .
Tissue Specificity	Widely expressed.
Function	function:Reversibly stimulates the variable phosphotyrosyl phosphatase activity of PP2A core heterodimer in presence of ATP and Mg(2+) (in vitro).,similarity:Belongs to the PTPA-type PPlase family.,subunit:Associates with PP2A heterodimeric core enzyme, composed of a 36 kDa catalytic subunit (subunit C) and a 65 kDa constant regulatory subunit (PR65 or subunit A).,tissue specificity:Widely expressed.,
Background	Protein phosphatase 2A is one of the four major Ser/Thr phosphatases and is implicated in the negative control of cell growth and division. Protein phosphatase 2A holoenzymes are heterotrimeric proteins composed of a structural subunit A, a catalytic subunit C, and a regulatory subunit B. The regulatory subunit is encoded

Nanjing BYabscience technology Co.,Ltd



by a diverse set of genes that have been grouped into the B/PR55, B'/PR61, and B''/PR72 families. These different regulatory subunits confer distinct enzymatic specificities and intracellular localizations to the holoenzyme. The product of this gene belongs to the B' family. This gene encodes a specific phosphotyrosyl phosphatase activator of the dimeric form of protein phosphatase 2A. Alternative splicing results in multiple transcript variants encoding different isoforms. [provided by RefSeq, Jul 2008],

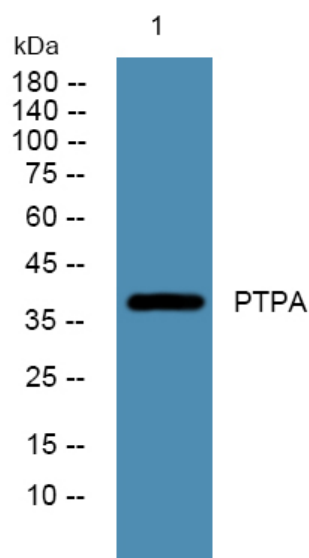
matters needing attention

Avoid repeated freezing and thawing!

Usage suggestions

This product can be used in immunological reaction related experiments. For more information, please consult technical personnel.

Products Images



Western blot analysis of lysates from SW480 cells, primary antibody was diluted at 1:1000, 4° over night