



CCL13 Polyclonal Antibody

Catalog No	BYab-06188
Isotype	IgG
Reactivity	Human;Rat;Mouse;
Applications	WB;ELISA
Gene Name	CCL13 MCP4 NCC1 SCYA13
Protein Name	C-C motif chemokine 13 (CK-beta-10) (Monocyte chemoattractant protein 4) (Monocyte chemotactic protein 4) (MCP-4) (NCC-1) (Small-inducible cytokine A13) [Cleaved into: C-C motif chemokine 13, long cha
Immunogen	Synthesized peptide derived from human protein . at AA range: 20-100
Specificity	CCL13 Polyclonal Antibody detects endogenous levels of protein.
Formulation	Liquid in PBS containing 50% glycerol, and 0.02% sodium azide.
Source	Polyclonal, Rabbit,IgG
Purification	The antibody was affinity-purified from rabbit antiserum by affinity-chromatography using epitope-specific immunogen.
Dilution	WB 1:500-2000 ELISA 1:5000-20000
Concentration	1 mg/ml
Purity	≥90%
Storage Stability	-20°C/1 year
Synonyms	
Observed Band	10kD
Cell Pathway	Secreted.
Tissue Specificity	Widely expressed. Found in small intestine, thymus, colon, lung, trachea, stomach and lymph node. Low levels seen in the pulmonary artery smooth muscle cells.
Function	function:Chemotactic factor that attracts monocytes, lymphocytes, basophils and eosinophils, but not neutrophils. Signals through CCR2B and CCR3 receptors. Plays a role in the accumulation of leukocytes at both sides of allergic and non-allergic inflammation. May be involved in the recruitment of monocytes into the arterial wall during the disease process of atherosclerosis. May play a role in the monocyte attraction in tissues chronically exposed to exogenous pathogens.,induction:By interleukin-1 and TNF-alpha.,mass spectrometry: PubMed:8642349,miscellaneous:This protein can bind heparin.,online information:CCL13 entry,PTM:One major form (form long), and two minor forms

Nanjing BYabscience technology Co.,Ltd



(short chain and medium chain) are produced by differential signal peptide cleavage. The medium chain is about 30-fold less active than the long chain.,similarity:Belongs to the intercrine beta (chemokine CC) family.,tis

Background

This antimicrobial gene is one of several Cys-Cys (CC) cytokine genes clustered on the q-arm of chromosome 17. Cytokines are a family of secreted proteins involved in immunoregulatory and inflammatory processes. The CC cytokines are proteins characterized by two adjacent cysteines. The cytokine encoded by this gene displays chemotactic activity for monocytes, lymphocytes, basophils and eosinophils, but not neutrophils. This chemokine plays a role in accumulation of leukocytes during inflammation. It may also be involved in the recruitment of monocytes into the arterial wall during arteriosclerosis. [provided by RefSeq, Sep 2014],

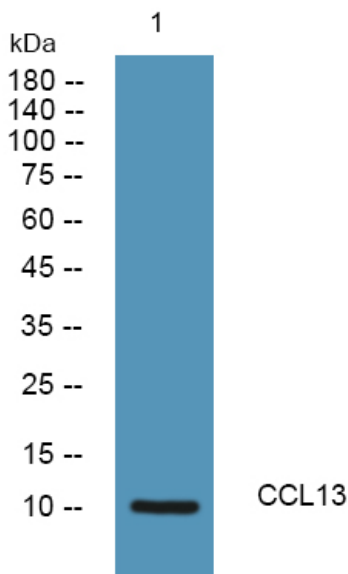
matters needing attention

Avoid repeated freezing and thawing!

Usage suggestions

This product can be used in immunological reaction related experiments. For more information, please consult technical personnel.

Products Images



Nanjing BYabscience technology Co.,Ltd