



CLASR Polyclonal Antibody

Catalog No	BYab-06234
Isotype	IgG
Reactivity	Human;Rat;Mouse
Applications	WB;ELISA
Gene Name	CLASRP SFRS16 SWAP2 UNQ2428/PRO4988
Protein Name	CLK4-associating serine/arginine rich protein (Splicing factor, arginine/serine-rich 16) (Suppressor of white-apricot homolog 2)
Immunogen	Synthesized peptide derived from part region of human protein
Specificity	CLASR Polyclonal Antibody detects endogenous levels of protein.
Formulation	Liquid in PBS containing 50% glycerol, and 0.02% sodium azide.
Source	Polyclonal, Rabbit,IgG
Purification	The antibody was affinity-purified from rabbit antiserum by affinity-chromatography using epitope-specific immunogen.
Dilution	WB 1:500-2000 ELISA 1:5000-20000
Concentration	1 mg/ml
Purity	≥90%
Storage Stability	-20°C/1 year
Synonyms	
Observed Band	74kD
Cell Pathway	Nucleus .
Tissue Specificity	Epithelium,Skin,
Function	caution:It is uncertain whether Met-1 or Met-16 is the initiator.,function:Probably functions as an alternative splicing regulator. May regulate the mRNA splicing of genes such as CLK1. May act by regulating members of the CLK kinase family.,PTM:Phosphorylated in vitro by CLK4.,similarity:Belongs to the splicing factor SR family.,subunit:Probably interacts with CLK4.,
Background	caution:It is uncertain whether Met-1 or Met-16 is the initiator.,function:Probably functions as an alternative splicing regulator. May regulate the mRNA splicing of genes such as CLK1. May act by regulating members of the CLK kinase family.,PTM:Phosphorylated in vitro by CLK4.,similarity:Belongs to the splicing factor SR family.,subunit:Probably interacts with CLK4.,

Nanjing BYabscience technology Co.,Ltd



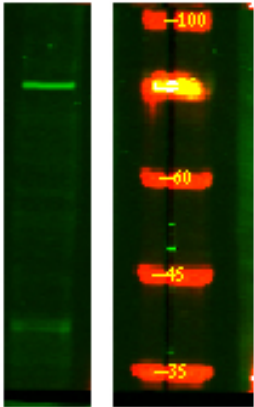
matters needing attention

Avoid repeated freezing and thawing!

Usage suggestions

This product can be used in immunological reaction related experiments. For more information, please consult technical personnel.

Products Images



Western Blot analysis of HEK293 lysis, using primary antibody at 1:1000 dilution. Secondary antibody(catalog#:RS23920) was diluted at 1:10000