



# CCNG2 Polyclonal Antibody

<b>Catalog No</b>	BYab-06430
<b>Isotype</b>	IgG
<b>Reactivity</b>	Human;Mouse
<b>Applications</b>	WB;ELISA
<b>Gene Name</b>	CCNG2
<b>Protein Name</b>	Cyclin-G2
<b>Immunogen</b>	Synthesized peptide derived from human protein . at AA range: 20-100
<b>Specificity</b>	CCNG2 Polyclonal Antibody detects endogenous levels of protein.
<b>Formulation</b>	Liquid in PBS containing 50% glycerol, and 0.02% sodium azide.
<b>Source</b>	Polyclonal, Rabbit,IgG
<b>Purification</b>	The antibody was affinity-purified from rabbit antiserum by affinity-chromatography using epitope-specific immunogen.
<b>Dilution</b>	WB 1:500-2000 ELISA 1:5000-20000
<b>Concentration</b>	1 mg/ml
<b>Purity</b>	≥90%
<b>Storage Stability</b>	-20°C/1 year
<b>Synonyms</b>	
<b>Observed Band</b>	37kD
<b>Cell Pathway</b>	Cytoplasm .
<b>Tissue Specificity</b>	High levels in cerebellum, thymus, spleen and prostate. Low levels in skeletal muscle.
<b>Function</b>	developmental stage:Expression levels increase through the cell cycle to peak in the mid/late-S phase and decrease during G2/M phase.,function:May play a role in growth regulation and in negative regulation of cell cycle progression.,induction:Activated by actinomycin-D induced DNA damage.,similarity:Belongs to the cyclin family.,similarity:Belongs to the cyclin family. Cyclin G subfamily.,tissue specificity:High levels in cerebellum, thymus, spleen and prostate. Low levels in skeletal muscle.,
<b>Background</b>	The eukaryotic cell cycle is governed by cyclin-dependent protein kinases (CDKs) whose activities are regulated by cyclins and CDK inhibitors. The 8 species of cyclins reported in mammals, cyclins A through H, share a conserved amino acid sequence of about 90 residues called the cyclin box. The amino acid

**Nanjing BYabscience technology Co.,Ltd**



sequence of cyclin G is well conserved among mammals. The nucleotide sequence of cyclin G1 and cyclin G2 are 53% identical. Unlike cyclin G1, cyclin G2 contains a C-terminal PEST protein destabilization motif, suggesting that cyclin G2 expression is tightly regulated through the cell cycle. [provided by RefSeq, Jul 2008],

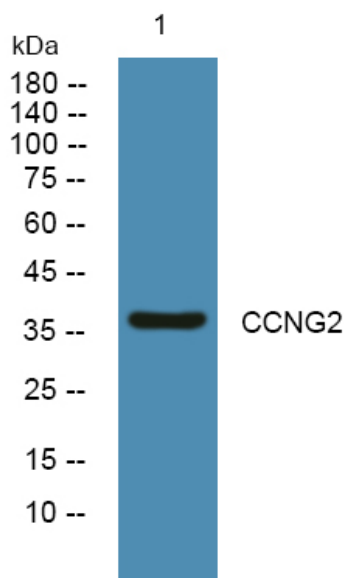
**matters needing attention**

Avoid repeated freezing and thawing!

**Usage suggestions**

This product can be used in immunological reaction related experiments. For more information, please consult technical personnel.

## Products Images



Western blot analysis of lysates from KB cells, primary antibody was diluted at 1:1000, 4° over night