



CD27 Polyclonal Antibody

Catalog No	BYab-06437
Isotype	IgG
Reactivity	Human;Rat;Mouse;
Applications	WB;ELISA
Gene Name	CD27 TNFRSF7
Protein Name	CD27 antigen (CD27L receptor) (T-cell activation antigen CD27) (T14) (Tumor necrosis factor receptor superfamily member 7) (CD antigen CD27)
Immunogen	Synthesized peptide derived from human protein . at AA range: 1-80
Specificity	CD27 Polyclonal Antibody detects endogenous levels of protein.
Formulation	Liquid in PBS containing 50% glycerol, and 0.02% sodium azide.
Source	Polyclonal, Rabbit,IgG
Purification	The antibody was affinity-purified from rabbit antiserum by affinity-chromatography using epitope-specific immunogen.
Dilution	WB 1:500-2000 ELISA 1:5000-20000
Concentration	1 mg/ml
Purity	≥90%
Storage Stability	-20°C/1 year
Synonyms	
Observed Band	28kD
Cell Pathway	Membrane; Single-pass type I membrane protein.
Tissue Specificity	Found in most T-lymphocytes.
Function	function:Receptor for CD70/CD27L. May play a role in survival of activated T-cells. May play a role in apoptosis through association with SIVA1.,PTM:Phosphorylated and O-glycosylated.,similarity:Contains 3 TNFR-Cys repeats.,subunit:Homodimer. Interacts with SIVA1 and TRAF2.,tissue specificity:Found in most T-lymphocytes.,
Background	The protein encoded by this gene is a member of the TNF-receptor superfamily. This receptor is required for generation and long-term maintenance of T cell immunity. It binds to ligand CD70, and plays a key role in regulating B-cell activation and immunoglobulin synthesis. This receptor transduces signals that lead to the activation of NF-kappaB and MAPK8/JNK. Adaptor proteins TRAF2 and TRAF5 have been shown to mediate the signaling process of this receptor.

Nanjing BYabscience technology Co.,Ltd



CD27-binding protein (SIVA), a proapoptotic protein, can bind to this receptor and is thought to play an important role in the apoptosis induced by this receptor. [provided by RefSeq, Jul 2008],

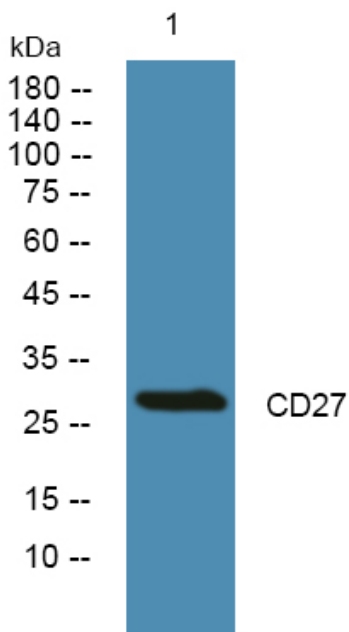
matters needing attention

Avoid repeated freezing and thawing!

Usage suggestions

This product can be used in immunological reaction related experiments. For more information, please consult technical personnel.

Products Images



Western blot analysis of lysates from KB cells, primary antibody was diluted at 1:1000, 4° over night