



ATOH8 Polyclonal Antibody

Catalog No	BYab-06497
Isotype	IgG
Reactivity	Human;Rat;Mouse;
Applications	WB;ELISA
Gene Name	ATOH8 ATH6 BHLHA21
Protein Name	Protein atonal homolog 8 (Class A basic helix-loop-helix protein 21) (bHLHa21) (Helix-loop-helix protein hATH-6) (hATH6)
Immunogen	Synthesized peptide derived from part region of human protein
Specificity	ATOH8 Polyclonal Antibody detects endogenous levels of protein.
Formulation	Liquid in PBS containing 50% glycerol, and 0.02% sodium azide.
Source	Polyclonal, Rabbit,IgG
Purification	The antibody was affinity-purified from rabbit antiserum by affinity-chromatography using epitope-specific immunogen.
Dilution	WB 1:500-2000 ELISA 1:5000-20000
Concentration	1 mg/ml
Purity	≥90%
Storage Stability	-20°C/1 year
Synonyms	
Observed Band	35kD
Cell Pathway	Nucleus . Nucleus speckle . Cytoplasm .
Tissue Specificity	Expressed in lung, liver, kidney, heart and pancreas. Expressed in endothel of umbilical vessels.
Function	function:Putative transcription factor. May be implicated in specification and differentiation of neuronal cell lineages in the brain. May participate in kidney development and may be involved in podocyte differentiation.,similarity:Contains 1 basic helix-loop-helix (bHLH) domain.,subunit:Efficient DNA binding requires dimerization with another bHLH protein.,tissue specificity:Expressed in lung, liver, kidney, heart and pancreas. Expressed in endothel of umbilical vessels.,
Background	function:Putative transcription factor. May be implicated in specification and differentiation of neuronal cell lineages in the brain. May participate in kidney development and may be involved in podocyte differentiation.,similarity:Contains 1 basic helix-loop-helix (bHLH) domain.,subunit:Efficient DNA binding requires dimerization with another bHLH protein.,tissue specificity:Expressed in lung, liver,

Nanjing BYabscience technology Co.,Ltd



kidney, heart and pancreas. Expressed in endothel of umbilical vessels.,

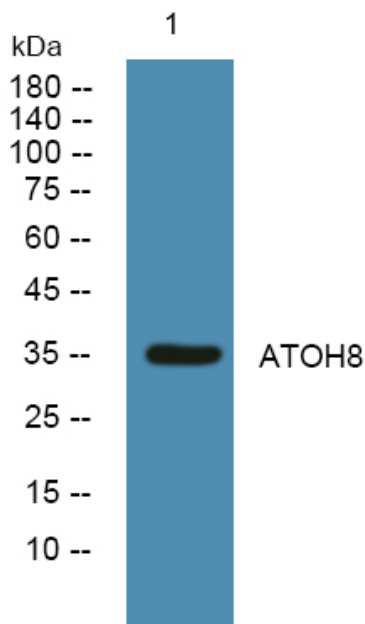
matters needing attention

Avoid repeated freezing and thawing!

Usage suggestions

This product can be used in immunological reaction related experiments. For more information, please consult technical personnel.

Products Images



Western blot analysis of lysates from SW480 cells, primary antibody was diluted at 1:1000, 4°over night