



COX7R Polyclonal Antibody

Catalog No	BYab-06598
Isotype	IgG
Reactivity	Human;Mouse
Applications	WB;ELISA
Gene Name	COX7A2L COX7AR COX7RP
Protein Name	Cytochrome c oxidase subunit 7A-related protein, mitochondrial (COX7a-related protein) (Cytochrome c oxidase subunit VIIa-related protein) (EB1)
Immunogen	Synthesized peptide derived from human protein . at AA range: 10-90
Specificity	COX7R Polyclonal Antibody detects endogenous levels of protein.
Formulation	Liquid in PBS containing 50% glycerol, and 0.02% sodium azide.
Source	Polyclonal, Rabbit,IgG
Purification	The antibody was affinity-purified from rabbit antiserum by affinity-chromatography using epitope-specific immunogen.
Dilution	WB 1:500-2000 ELISA 1:5000-20000
Concentration	1 mg/ml
Purity	≥90%
Storage Stability	-20°C/1 year
Synonyms	
Observed Band	12kD
Cell Pathway	Mitochondrion inner membrane .
Tissue Specificity	Lung,Placenta,Prostate,Spleen,
Function	function:May be a regulatory subunit of cytochrome c oxidase that mediates the higher level of energy production in target cells by estrogen.,induction:By estrogen.,similarity:Belongs to the cytochrome c oxidase VIIa family.,
Background	Cytochrome c oxidase (COX), the terminal component of the mitochondrial respiratory chain, catalyzes the electron transfer from reduced cytochrome c to oxygen. This component is a heteromeric complex consisting of 3 catalytic subunits encoded by mitochondrial genes and multiple structural subunits encoded by nuclear genes. The mitochondrially-encoded subunits function in electron transfer, and the nuclear-encoded subunits may function in the regulation and assembly of the complex. This nuclear gene encodes a protein similar to polypeptides 1 and 2 of subunit VIIa in the C-terminal region, and also highly

Nanjing BYabscience technology Co.,Ltd



similar to the mouse Sig81 protein sequence. This gene is expressed in all tissues, and upregulated in a breast cancer cell line after estrogen treatment. It is possible that this gene represents a regulatory subunit of COX and mediates the higher level of energy production in target

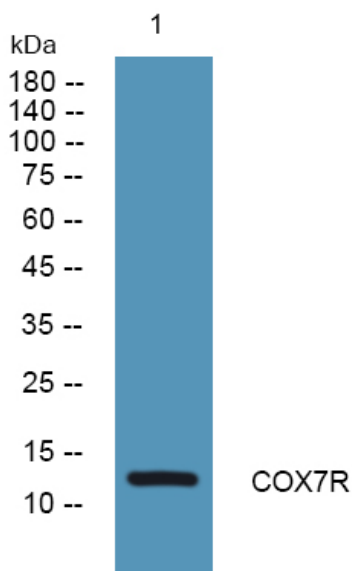
matters needing attention

Avoid repeated freezing and thawing!

Usage suggestions

This product can be used in immunological reaction related experiments. For more information, please consult technical personnel.

Products Images



Western blot analysis of lysates from PC12 cells, primary antibody was diluted at 1:1000, 4°over night