



NFIP2 Polyclonal Antibody

Catalog No	BYab-06689
Isotype	IgG
Reactivity	Human;Rat;Mouse;
Applications	WB;ELISA
Gene Name	NDFIP2 KIAA1165 N4WBP5A
Protein Name	NEDD4 family-interacting protein 2 (NEDD4 WW domain-binding protein 5A) (Putative MAPK-activating protein PM04/PM05/PM06/PM07) (Putative NF-kappa-B-activating protein 413)
Immunogen	Synthesized peptide derived from part region of human protein
Specificity	NFIP2 Polyclonal Antibody detects endogenous levels of protein.
Formulation	Liquid in PBS containing 50% glycerol, and 0.02% sodium azide.
Source	Polyclonal, Rabbit,IgG
Purification	The antibody was affinity-purified from rabbit antiserum by affinity-chromatography using epitope-specific immunogen.
Dilution	WB 1:500-2000 ELISA 1:5000-20000
Concentration	1 mg/ml
Purity	≥90%
Storage Stability	-20°C/1 year
Synonyms	
Observed Band	36kD
Cell Pathway	Endosome membrane ; Multi-pass membrane protein . Golgi apparatus membrane . Endosome, multivesicular body membrane .
Tissue Specificity	Expressed in brain, lung, heart, skeletal muscle, kidney, liver and placenta.
Function	function:May be involved in endocytosis. Regulates ENaC surface expression (By similarity). May be involved in NF-kappa-B and MAPK signaling pathways.,induction:By T-cell activation.,PTM:Ubiquitinated by NEDD4 or NEDD4L; which does not affect turnover.,subunit:Interacts with NEDD4L (By similarity). Interacts with NEDD4.,tissue specificity:Expressed in brain, lung, heart, skeletal muscle, kidney, liver and placenta.,
Background	function:May be involved in endocytosis. Regulates ENaC surface expression (By similarity). May be involved in NF-kappa-B and MAPK signaling pathways.,induction:By T-cell activation.,PTM:Ubiquitinated by NEDD4 or NEDD4L; which does not affect turnover.,subunit:Interacts with NEDD4L (By

Nanjing BYabscience technology Co.,Ltd



similarity). Interacts with NEDD4.,tissue specificity:Expressed in brain, lung, heart, skeletal muscle, kidney, liver and placenta.,

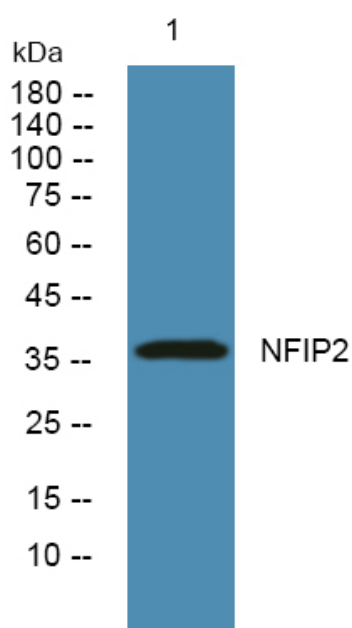
matters needing attention

Avoid repeated freezing and thawing!

Usage suggestions

This product can be used in immunological reaction related experiments. For more information, please consult technical personnel.

Products Images



Western blot analysis of lysates from PC12 cells, primary antibody was diluted at 1:1000, 4°over night