



# GRSF1 rabbit pAb

<b>Catalog No</b>	BYab-11200
<b>Isotype</b>	IgG
<b>Reactivity</b>	Human; Mouse
<b>Applications</b>	WB
<b>Gene Name</b>	GRSF1
<b>Protein Name</b>	GRSF1
<b>Immunogen</b>	Synthesized peptide derived from human GRSF1 AA range: 302-352
<b>Specificity</b>	This antibody detects endogenous levels of GRSF1 at Human/Mouse
<b>Formulation</b>	Liquid in PBS containing 50% glycerol, 0.5% BSA and 0.02% sodium azide.
<b>Source</b>	Polyclonal, Rabbit,IgG
<b>Purification</b>	The antibody was affinity-purified from rabbit serum by affinity-chromatography using specific immunogen.
<b>Dilution</b>	WB 1: 500-2000
<b>Concentration</b>	1 mg/ml
<b>Purity</b>	≥90%
<b>Storage Stability</b>	-20°C/1 year
<b>Synonyms</b>	
<b>Observed Band</b>	
<b>Cell Pathway</b>	[Isoform 1]: Mitochondrion matrix . Localizes to mitochondrial RNA granules found in close proximity to the mitochondrial nucleoids. .; [Isoform 2]: Cytoplasm .
<b>Tissue Specificity</b>	
<b>Function</b>	function: Binds RNAs containing the 14 base G-rich element., sequence caution: Unlikely isoform. Aberrant splice sites., similarity: Contains 3 RRM (RNA recognition motif) domains.,
<b>Background</b>	The protein encoded by this gene is a cellular protein that binds RNAs containing the G-rich element. The protein is localized in the cytoplasm, and has been shown to stimulate translation of viral mRNAs in vitro. Multiple transcript variants encoding different isoforms have been found for this gene. [provided by RefSeq, Jul 2008],
<b>matters needing attention</b>	Avoid repeated freezing and thawing!

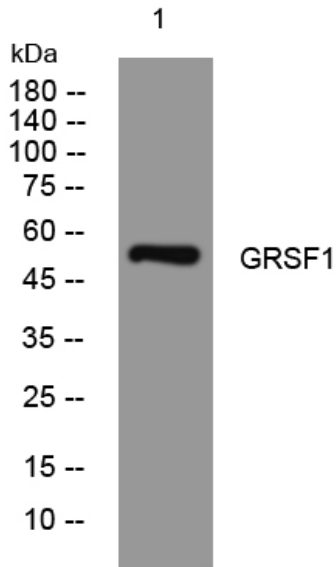
**Nanjing BYabscience technology Co.,Ltd**



### Usage suggestions

This product can be used in immunological reaction related experiments. For more information, please consult technical personnel.

### Products Images



Western blot analysis of lysates from 293T cells,  
primary antibody was diluted at 1:1000, 4° over night