



SNPC1 rabbit pAb

Catalog No	BYab-11209
Isotype	IgG
Reactivity	Human; Mouse
Applications	WB;ELISA;IHC
Gene Name	SNAPC1 SNAP43
Protein Name	SNPC1
Immunogen	Synthesized peptide derived from human SNPC1 AA range: 44-94
Specificity	This antibody detects endogenous levels of SNPC1 at Human/Mouse
Formulation	Liquid in PBS containing 50% glycerol, 0.5% BSA and 0.02% sodium azide.
Source	Polyclonal, Rabbit,IgG
Purification	The antibody was affinity-purified from rabbit serum by affinity-chromatography using specific immunogen.
Dilution	WB 1:500-2000;IHC-p 1:50-300; ELISA 2000-20000
Concentration	1 mg/ml
Purity	≥90%
Storage Stability	-20°C/1 year
Synonyms	
Observed Band	
Cell Pathway	Nucleus.
Tissue Specificity	
Function	function:Part of the SNAPc complex required for the transcription of both RNA polymerase II and III small-nuclear RNA genes. Binds to the proximal sequence element (PSE), a non-TATA-box basal promoter element common to these 2 types of genes. Recruits TBP and BR2 to the U6 snRNA TATA box.,subunit:Part of the SNAPc complex composed of 5 subunits: SNAPC1, SNAPC2, SNAPC3, SNAPC4 and SNAPC5. SNAPC1 interacts with SNAPC3, SNAPC4 and TBP.,
Background	
matters needing attention	Avoid repeated freezing and thawing!

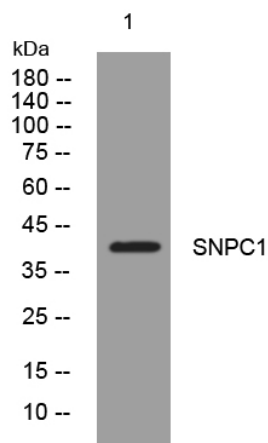
Nanjing BYabs science technology Co.,Ltd



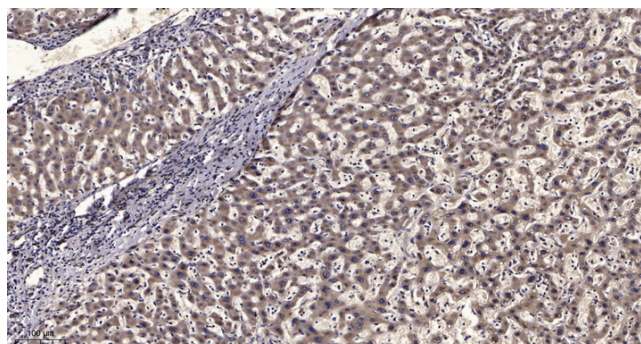
Usage suggestions

This product can be used in immunological reaction related experiments. For more information, please consult technical personnel.

Products Images



Western blot analysis of lysates from SH-SY5Y cells, primary antibody was diluted at 1:1000, 4° over night



Immunohistochemical analysis of paraffin-embedded human liver cancer. 1, Antibody was diluted at 1:200(4° overnight). 2, Tris-EDTA, pH9.0 was used for antigen retrieval. 3, Secondary antibody was diluted at 1:200(room temperature, 45min).