



COMP rabbit pAb

Catalog No	BYab-11223
Isotype	IgG
Reactivity	Human; Mouse;Rat
Applications	WB
Gene Name	COMP
Protein Name	COMP
Immunogen	Synthesized peptide derived from human COMP AA range: 628-678
Specificity	This antibody detects endogenous levels of COMP at Human/Mouse/Rat
Formulation	Liquid in PBS containing 50% glycerol, 0.5% BSA and 0.02% sodium azide.
Source	Polyclonal, Rabbit,IgG
Purification	The antibody was affinity-purified from rabbit serum by affinity-chromatography using specific immunogen.
Dilution	WB 1: 500-2000
Concentration	1 mg/ml
Purity	≥90%
Storage Stability	-20°C/1 year
Synonyms	
Observed Band	
Cell Pathway	Secreted, extracellular space, extracellular matrix .
Tissue Specificity	Abundantly expressed in the chondrocyte extracellular matrix, and is also found in bone, tendon, ligament and synovium and blood vessels. Increased amounts are produced during late stages of osteoarthritis in the area adjacent to the main defect.
Function	disease:Defects in COMP are the cause of multiple epiphyseal dysplasia type 1 (EDM1) [MIM:132400]. EDM is a generalized skeletal dysplasia associated with significant morbidity. Joint pain, joint deformity, waddling gait, and short stature are the main clinical signs and symptoms. EDM is broadly categorized into the more severe Fairbank and the milder Ribbing types.,disease:Defects in COMP are the cause of pseudoachondroplasia (PSACH) [MIM:177170]. PSAC is a dominantly inherited chondrodysplasia characterized by short stature and early-onset osteoarthritis. PSACH is more severe than EDM1 and is recognized in early childhood.,similarity:Belongs to the thrombospondin family.,similarity:Contains 1 TSP C-terminal (TSPC) domain.,similarity:Contains 4

Nanjing BYabscience technology Co.,Ltd



EGF-like domains.,similarity:Contains 8 TSP type-3 repeats.,subunit:Pentamer; disulfide-linked.,

Background

The protein encoded by this gene is a noncollagenous extracellular matrix (ECM) protein. It consists of five identical glycoprotein subunits, each with EGF-like and calcium-binding (thrombospondin-like) domains. Oligomerization results from formation of a five-stranded coiled coil and disulfides. Binding to other ECM proteins such as collagen appears to depend on divalent cations. Contraction or expansion of a 5 aa aspartate repeat and other mutations can cause pseudochoondroplasia (PSACH) and multiple epiphyseal dysplasia (MED). [provided by RefSeq, Jul 2016],

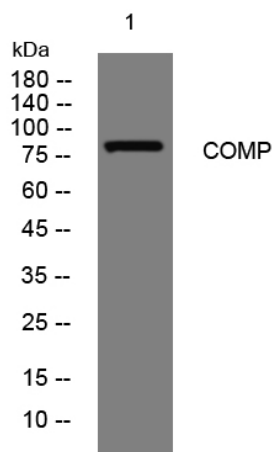
matters needing attention

Avoid repeated freezing and thawing!

Usage suggestions

This product can be used in immunological reaction related experiments. For more information, please consult technical personnel.

Products Images



Western blot analysis of lysates from Jarkat cells, primary antibody was diluted at 1:1000, 4° over night