



F8I2 rabbit pAb

| | |
|---------------------------|--|
| Catalog No | BYab-11229 |
| Isotype | IgG |
| Reactivity | Human; Mouse |
| Applications | WB |
| Gene Name | F8A1 F8A; F8A2 F8A; F8A3 F8A |
| Protein Name | F8I2 |
| Immunogen | Synthesized peptide derived from human F8I2 AA range: 33-83 |
| Specificity | This antibody detects endogenous levels of F8I2 at Human/Mouse |
| Formulation | Liquid in PBS containing 50% glycerol, 0.5% BSA and 0.02% sodium azide. |
| Source | Polyclonal, Rabbit,IgG |
| Purification | The antibody was affinity-purified from rabbit serum by affinity-chromatography using specific immunogen. |
| Dilution | WB 1: 500-2000 |
| Concentration | 1 mg/ml |
| Purity | ≥90% |
| Storage Stability | -20°C/1 year |
| Synonyms | |
| Observed Band | |
| Cell Pathway | Cytoplasm . Nucleus . Early endosome . Nucleus, nuclear body . Diffuse presence in the cytoplasm and accumulation in the nucleus (PubMed:16476778). In absence of HTT, F8A1/F8A2/F8A3 is concentrated in cytoplasm (By similarity). Colocalized with HTT in endosomes (PubMed:16476778). In neuron found in intranuclear structures, the intranuclear rodlets (INRs), also known as rodlets of Roncoroni, in association with ubiquitin (By similarity). . |
| Tissue Specificity | Produced abundantly in a wide variety of cell types. |
| Function | function:Not known. Possible housekeeping role.,tissue specificity:Produced abundantly in a wide variety of cell types., |
| Background | This gene is contained entirely within intron 22 of the factor VIII gene; spans less than 2 kb, and is transcribed in the direction opposite of factor VIII. A portion of intron 22 (int22h), containing F8A, is repeated twice extragenically closer to the Xq telomere. Although its function is unknown, the observation that this gene is conserved in the mouse implies it has some function. Unlike factor VIII, this gene |

Nanjing BYabscience technology Co.,Ltd



is transcribed abundantly in a wide variety of cell types. [provided by RefSeq, Jul 2008],

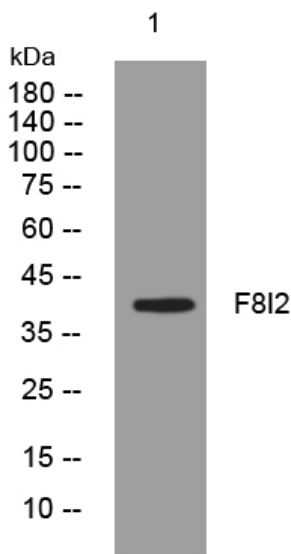
matters needing attention

Avoid repeated freezing and thawing!

Usage suggestions

This product can be used in immunological reaction related experiments. For more information, please consult technical personnel.

Products Images



Western blot analysis of lysates from SW480 cells, primary antibody was diluted at 1:1000, 4° over night