



AK1BA rabbit pAb

Catalog No	BYab-11233
Isotype	IgG
Reactivity	Human;Rat;Mouse;
Applications	WB
Gene Name	AKR1B10 AKR1B11
Protein Name	AK1BA
Immunogen	Synthesized peptide derived from human AK1BA AA range: 124-174
Specificity	This antibody detects endogenous levels of AK1BA at Human
Formulation	Liquid in PBS containing 50% glycerol, 0.5% BSA and 0.02% sodium azide.
Source	Polyclonal, Rabbit,IgG
Purification	The antibody was affinity-purified from rabbit serum by affinity-chromatography using specific immunogen.
Dilution	WB 1: 500-2000
Concentration	1 mg/ml
Purity	≥90%
Storage Stability	-20°C/1 year
Synonyms	
Observed Band	
Cell Pathway	Lysosome . Secreted . Secreted through a lysosome-mediated non-classical pathway.
Tissue Specificity	Found in many tissues. Highly expressed in small intestine, colon and adrenal gland.
Function	enzyme regulation:Inhibited by tolrestat.,function:Acts as all-trans-retinaldehyde reductase. Can efficiently reduce aliphatic and aromatic aldehydes, and is less active on hexoses (in vitro). May be responsible for detoxification of reactive aldehydes in the digested food before the nutrients are passed on to other organs.,similarity:Belongs to the aldo/keto reductase family.,tissue specificity:Found in many tissues. Highly expressed in small intestine, colon and adrenal gland.,
Background	This gene encodes a member of the aldo/keto reductase superfamily, which consists of more than 40 known enzymes and proteins. This member can efficiently reduce aliphatic and aromatic aldehydes, and it is less active on hexoses. It is highly expressed in adrenal gland, small intestine, and colon, and

Nanjing BYabs science technology Co.,Ltd



may play an important role in liver carcinogenesis. [provided by RefSeq, Jul 2008],

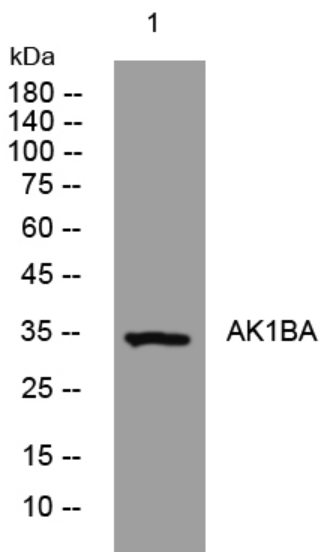
matters needing attention

Avoid repeated freezing and thawing!

Usage suggestions

This product can be used in immunological reaction related experiments. For more information, please consult technical personnel.

Products Images



Western blot analysis of lysates from K562 cells, primary antibody was diluted at 1:1000, 4° over night