



RNAS7 rabbit pAb

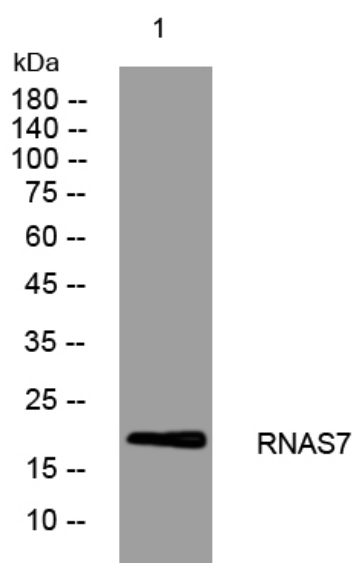
Catalog No	BYab-11238
Isotype	IgG
Reactivity	Human;Rat;Mouse;
Applications	WB;ELISA;IHC
Gene Name	RNASE7 UNQ2516/PRO6006
Protein Name	RNAS7
Immunogen	Synthesized peptide derived from human RNAS7 AA range: 37-87
Specificity	This antibody detects endogenous levels of RNAS7 at Human
Formulation	Liquid in PBS containing 50% glycerol, 0.5% BSA and 0.02% sodium azide.
Source	Polyclonal, Rabbit,IgG
Purification	The antibody was affinity-purified from rabbit serum by affinity-chromatography using specific immunogen.
Dilution	WB 1:500-2000;IHC-p 1:50-300; ELISA 2000-20000
Concentration	1 mg/ml
Purity	≥90%
Storage Stability	-20°C/1 year
Synonyms	
Observed Band	
Cell Pathway	Secreted . Detected in urine. .
Tissue Specificity	Expressed in collecting ducts in kidney, and in apical uroepithelium in bladder (at protein level) (PubMed:25075772). Expressed in various epithelial tissues including skin, respiratory tract, genito-urinary tract and, at a low level, in the gut (PubMed:12244054). Expressed in liver, kidney, skeletal muscle and heart (PubMed:12527768).
Function	function:Exhibits a potent RNase activity. Has broad-spectrum antimicrobial activity against many pathogenic microorganisms and remarkably potent activity (lethal dose of 90% < 30 nM) against a vancomycin resistant Enterococcus faecium.,similarity:Belongs to the pancreatic ribonuclease family.,tissue specificity:Expressed in various epithelial tissues including skin, respiratory tract, genito-urinary tract and, at a low level, in the gut. Expressed in liver, kidney, skeletal muscle and heart.,

Nanjing BYabscience technology Co.,Ltd

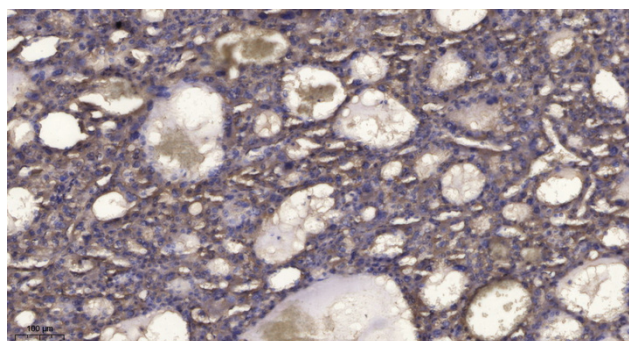


Background	The protein encoded by this gene belongs to the pancreatic ribonuclease family, a subset of the ribonuclease A superfamily. The protein has broad-spectrum antimicrobial activity against bacteria and fungi. [provided by RefSeq, Oct 2014],
matters needing attention	Avoid repeated freezing and thawing!
Usage suggestions	This product can be used in immunological reaction related experiments. For more information, please consult technical personnel.

Products Images



Western blot analysis of lysates from HpeG2 cells, primary antibody was diluted at 1:1000, 4° over night



Immunohistochemical analysis of paraffin-embedded human liver cancer. 1, Antibody was diluted at 1:200(4° overnight). 2, Tris-EDTA, pH9.0 was used for antigen retrieval. 3, Secondary antibody was diluted at 1:200(room temperature, 45min).

Nanjing BYabs science technology Co.,Ltd

网址: www.njbybio.com

官方热线: 025-5229-8998

监督电话: 15950492658