



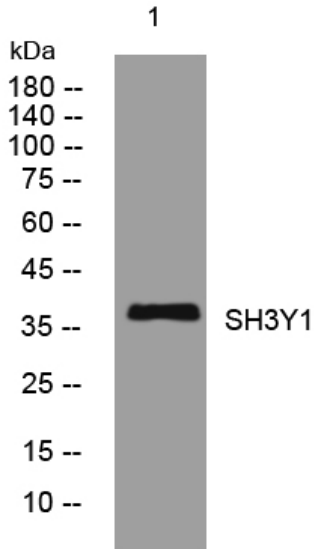
SH3Y1 rabbit pAb

Catalog No	BYab-11244
Isotype	IgG
Reactivity	Human; Mouse;Rat
Applications	WB;ELISA;IHC
Gene Name	SH3YL1
Protein Name	SH3Y1
Immunogen	Synthesized peptide derived from human SH3Y1 AA range: 10-60
Specificity	This antibody detects endogenous levels of SH3Y1 at Human/Mouse/Rat
Formulation	Liquid in PBS containing 50% glycerol, 0.5% BSA and 0.02% sodium azide.
Source	Polyclonal, Rabbit,IgG
Purification	The antibody was affinity-purified from rabbit serum by affinity-chromatography using specific immunogen.
Dilution	WB 1:500-2000;IHC-p 1:50-300; ELISA 2000-20000
Concentration	1 mg/ml
Purity	≥90%
Storage Stability	-20°C/1 year
Synonyms	
Observed Band	
Cell Pathway	ruffle membrane,
Tissue Specificity	
Function	similarity:Belongs to the SH3YL1 family.,similarity:Contains 1 SH3 domain.,subunit:Interacts with SH3D19.,
Background	
matters needing attention	Avoid repeated freezing and thawing!
Usage suggestions	This product can be used in immunological reaction related experiments. For more information, please consult technical personnel.

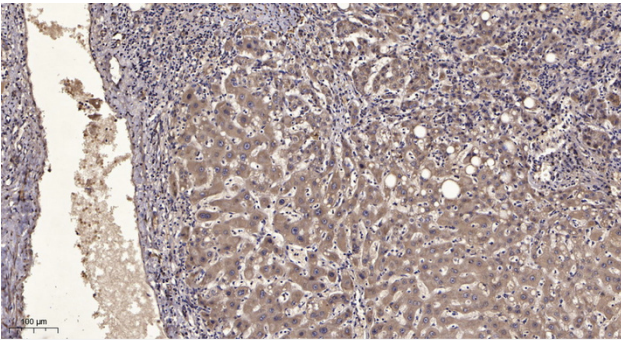
Nanjing BYabscience technology Co.,Ltd



Products Images



Western blot analysis of lysates from 293T cells, primary antibody was diluted at 1:1000, 4° over night



Immunohistochemical analysis of paraffin-embedded human liver cancer. 1, Antibody was diluted at 1:200 (4° overnight). 2, Tris-EDTA, pH 9.0 was used for antigen retrieval. 3, Secondary antibody was diluted at 1:200 (room temperature, 45 min).

Nanjing BYabs science technology Co., Ltd

网址: www.njbybio.com

官方热线: 025-5229-8998

监督电话: 15950492658