



CE120 rabbit pAb

Catalog No	BYab-11251
Isotype	IgG
Reactivity	Human; Mouse
Applications	WB
Gene Name	CEP120 CCDC100
Protein Name	CE120
Immunogen	Synthesized peptide derived from human CE120 AA range: 335-385
Specificity	This antibody detects endogenous levels of CE120 at Human/Mouse
Formulation	Liquid in PBS containing 50% glycerol, 0.5% BSA and 0.02% sodium azide.
Source	Polyclonal, Rabbit,IgG
Purification	The antibody was affinity-purified from rabbit serum by affinity-chromatography using specific immunogen.
Dilution	WB 1: 500-2000
Concentration	1 mg/ml
Purity	≥90%
Storage Stability	-20°C/1 year
Synonyms	
Observed Band	
Cell Pathway	Cytoplasm, cytoskeleton, microtubule organizing center, centrosome . Regulates the localization of TACC3 to the centrosome in neural progenitors in vivo. .
Tissue Specificity	
Function	function:Plays a role in the microtubule-dependent coupling of the nucleus and the centrosome. Involved in the processes that regulate centrosome-mediated interkinetic nuclear migration (INM) of neural progenitors and for proper positioning of neurons during brain development. Also implicated in the migration and selfrenewal of neural progenitors.,similarity:Belongs to the CEP120 family.,subcellular location:Regulates the localization of TACC3 to the centrosome in neural progenitors in vivo.,subunit:Interacts with TACC2 and TACC3.,
Background	This gene encodes a protein that functions in the microtubule-dependent coupling of the nucleus and the centrosome. A similar protein in mouse plays a role in both interkinetic nuclear migration, which is a characteristic pattern of nuclear

Nanjing BYabscience technology Co.,Ltd



movement in neural progenitors, and in neural progenitor self-renewal. Mutations in this gene are predicted to result in neurogenic defects. Alternative splicing results in multiple transcript variants. [provided by RefSeq, Oct 2009],

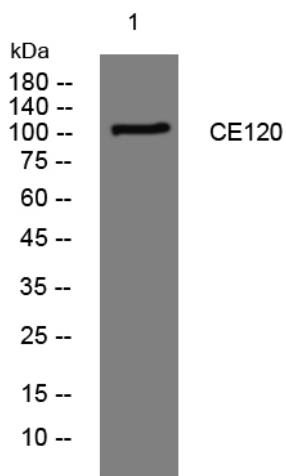
matters needing attention

Avoid repeated freezing and thawing!

Usage suggestions

This product can be used in immunological reaction related experiments. For more information, please consult technical personnel.

Products Images



Western blot analysis of lysates from HpeG2 cells, primary antibody was diluted at 1:1000, 4° over night