



PLCD3 rabbit pAb

Catalog No	BYab-11266
Isotype	IgG
Reactivity	Human; Mouse
Applications	WB;IHC
Gene Name	PLCD3 KIAA1964
Protein Name	PLCD3
Immunogen	Synthesized peptide derived from human PLCD3 AA range: 501-551
Specificity	This antibody detects endogenous levels of PLCD3 at Human/Mouse
Formulation	Liquid in PBS containing 50% glycerol, 0.5% BSA and 0.02% sodium azide.
Source	Polyclonal, Rabbit,IgG
Purification	The antibody was affinity-purified from rabbit serum by affinity-chromatography using specific immunogen.
Dilution	WB 1:500-2000;IHC-p 1:50-300
Concentration	1 mg/ml
Purity	≥90%
Storage Stability	-20°C/1 year
Synonyms	
Observed Band	
Cell Pathway	Membrane; Peripheral membrane protein. Cytoplasm. Cleavage furrow . Localizes at the cleavage furrow during cytokinesis. .
Tissue Specificity	Present in corneal epithelial cells (at protein level).
Function	catalytic activity:1-phosphatidyl-1D-myo-inositol 4,5-bisphosphate + H(2)O = 1D-myo-inositol 1,4,5-trisphosphate + diacylglycerol.,cofactor: Binds 3 calcium ions per subunit. Two of the calcium ions are bound to the C2 domain.,domain:The C2 domain is a Ca(2+)-dependent membrane-targeting module.,domain:The PH domain mediates interaction with the surface membrane by binding to PIP2.,enzyme regulation:Strongly activated by phosphatidic acid. Inhibited by phosphatidylethanolamine (PtdEtn), phosphatidylcholine (PtdCho), sphingomyelin and phosphatidylserine (PtdSer).,function:Hydrolyzes the phosphatidylinositol 4,5-bisphosphate (PIP2) to generate 2 second messenger molecules diacylglycerol (DAG) and inositol 1,4,5-trisphosphate (IP3). DAG mediates the activation of protein kinase C (PKC), while IP3 releases Ca(2+) from intracellular stores. Essential for trophoblast and placental development.

Nanjing BYabs science technology Co.,Ltd



Background

This gene encodes a member of the phospholipase C family, which catalyze the hydrolysis of phosphatidylinositol 4,5-bisphosphate to generate the second messengers diacylglycerol and inositol 1,4,5-trisphosphate (IP3). Diacylglycerol and IP3 mediate a variety of cellular responses to extracellular stimuli by inducing protein kinase C and increasing cytosolic Ca^{2+} concentrations. This enzyme localizes to the plasma membrane and requires calcium for activation. Its activity is inhibited by spermine, sphingosine, and several phospholipids. [provided by RefSeq, Jul 2008],

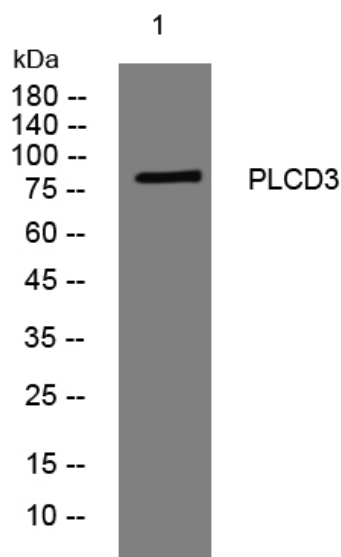
matters needing attention

Avoid repeated freezing and thawing!

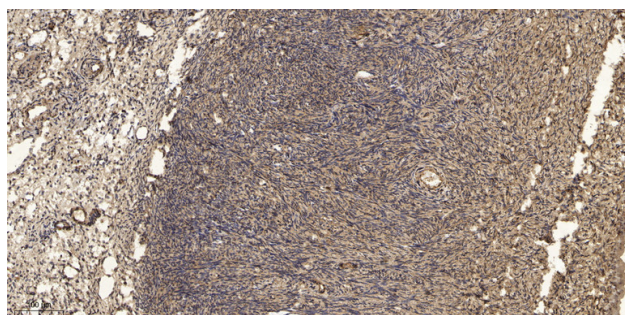
Usage suggestions

This product can be used in immunological reaction related experiments. For more information, please consult technical personnel.

Products Images



Western blot analysis of lysates from MCF-7 cells, primary antibody was diluted at 1:1000, 4° over night



Immunohistochemical analysis of paraffin-embedded human oophoroma. 1, Antibody was diluted at 1:200(4° overnight). 2, Tris-EDTA, pH9.0 was used for antigen retrieval. 3, Secondary antibody was diluted at 1:200(room temperature, 45min).

Nanjing BYabs science technology Co.,Ltd

网址: www.njbybio.com

官方热线: 025-5229-8998

监督电话: 15950492658