



LIPA2 rabbit pAb

Catalog No	BYab-11273
Isotype	IgG
Reactivity	Human; Mouse
Applications	WB;ELISA;IHC
Gene Name	PPFIA2
Protein Name	LIPA2
Immunogen	Synthesized peptide derived from human LIPA2 AA range: 49-99
Specificity	This antibody detects endogenous levels of LIPA2 at Human/Mouse
Formulation	Liquid in PBS containing 50% glycerol, 0.5% BSA and 0.02% sodium azide.
Source	Polyclonal, Rabbit,IgG
Purification	The antibody was affinity-purified from rabbit serum by affinity-chromatography using specific immunogen.
Dilution	WB 1:500-2000;IHC-p 1:50-300; ELISA 2000-20000
Concentration	1 mg/ml
Purity	≥90%
Storage Stability	-20°C/1 year
Synonyms	
Observed Band	
Cell Pathway	Cytoplasm . Cell surface . Cell projection, dendritic spine . Colocalizes with PTPRF at the cell surface.
Tissue Specificity	Expressed only in brain.
Function	domain:The N-terminal coiled coil regions mediate homodimerization preferentially and heterodimerization type alpha/alpha. The C-terminal, non-coiled coil regions mediate heterodimerization type alpha/beta and interaction with PTPRD, PTPRF and PTPRS.,function:Alters PTPRF cellular localization and induces PTPRF clustering. May regulate the disassembly of focal adhesions. May localize receptor-like tyrosine phosphatases type 2A at specific sites on the plasma membrane, possibly regulating their interaction with the extracellular environment and their association with substrates.,similarity:Belongs to the liprin family. Liprin-alpha subfamily.,similarity:Contains 3 SAM (sterile alpha motif) domains.,subcellular location:Colocalizes with PTPRF at the cell surface.,subunit:Forms homodimers and heterodimers with liprins-alpha and liprins-beta. Interacts with the second PTPase domain of PTPRD,

Nanjing BYabscience technology Co.,Ltd

**Background**

The protein encoded by this gene is a member of the LAR protein-tyrosine phosphatase-interacting protein (liprin) family. Liprins interact with members of LAR family of transmembrane protein tyrosine phosphatases, which are known to be important for axon guidance and mammary gland development. It has been proposed that liprins are multivalent proteins that form complex structures and act as scaffolds for the recruitment and anchoring of LAR family of tyrosine phosphatases. This protein has been shown to bind the calcium/calmodulin-dependent serine protein kinase (MAGUK family) protein (also known as CASK) and proposed to regulate higher-order brain functions in mammals. Alternative splicing results in multiple transcript variants. [provided by RefSeq, Sep 2013],

matters needing attention

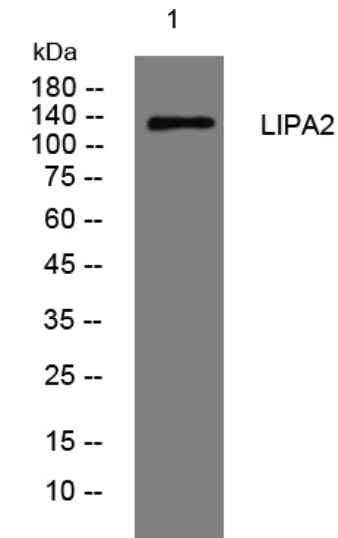
Avoid repeated freezing and thawing!

Usage suggestions

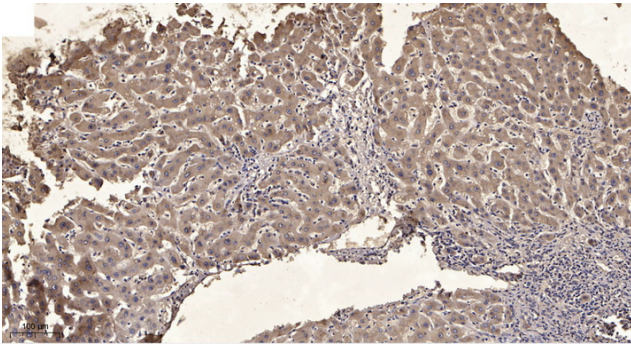
This product can be used in immunological reaction related experiments. For more information, please consult technical personnel.



Products Images



Western blot analysis of lysates from MDA-MB cells, primary antibody was diluted at 1:1000, 4° over night



Immunohistochemical analysis of paraffin-embedded human liver cancer. 1, Antibody was diluted at 1:200(4° overnight). 2, Tris-EDTA, pH9.0 was used for antigen retrieval. 3, Secondary antibody was diluted at 1:200(room temperature, 45min).

Nanjing BYabscience technology Co.,Ltd

网址: www.njbybio.com

官方热线: 025-5229-8998

监督电话: 15950492658