



KLHL2 rabbit pAb

Catalog No	BYab-11274
Isotype	IgG
Reactivity	Human; Mouse
Applications	WB;ELISA;IHC
Gene Name	KLHL2
Protein Name	KLHL2
Immunogen	Synthesized peptide derived from human KLHL2 AA range: 521-571
Specificity	This antibody detects endogenous levels of KLHL2 at Human/Mouse
Formulation	Liquid in PBS containing 50% glycerol, 0.5% BSA and 0.02% sodium azide.
Source	Polyclonal, Rabbit,IgG
Purification	The antibody was affinity-purified from rabbit serum by affinity-chromatography using specific immunogen.
Dilution	WB 1:500-2000;IHC-p 1:50-300; ELISA 2000-20000
Concentration	1 mg/ml
Purity	≥90%
Storage Stability	-20°C/1 year
Synonyms	
Observed Band	
Cell Pathway	Cytoplasm, cytoskeleton. Cell projection, ruffle. Cell projection . Cell projection, lamellipodium . Cytoplasm, cytosol. A proportion colocalizes with the actin cytoskeleton. When over-expressed, colocalizes with NPTXR in perinuclear aggresomes (By similarity). .
Tissue Specificity	Ubiquitous. Detected throughout the brain.
Function	function:May play a role in organizing the actin cytoskeleton of the brain cells.,similarity:Contains 1 BTB (POZ) domain.,similarity:Contains 6 Kelch repeats.,subunit:Binds actin.,tissue specificity:Predominantly expressed in brain.,
Background	
matters needing attention	Avoid repeated freezing and thawing!

Nanjing BYabscience technology Co.,Ltd

网址: www.njbybio.com

官方热线: 025-5229-8998

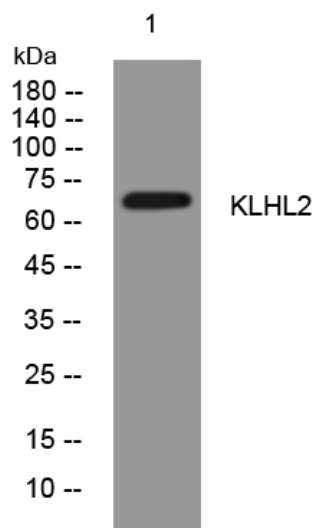
监督电话: 15950492658



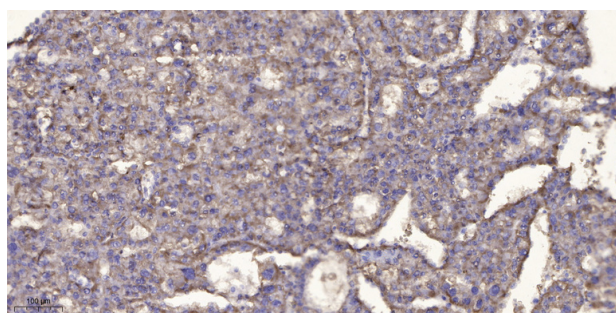
Usage suggestions

This product can be used in immunological reaction related experiments. For more information, please consult technical personnel.

Products Images



Western blot analysis of lysates from MCF-7 cells, primary antibody was diluted at 1:1000, 4° over night



Immunohistochemical analysis of paraffin-embedded human liver cancer. 1, Antibody was diluted at 1:200(4° overnight). 2, Tris-EDTA, pH9.0 was used for antigen retrieval. 3, Secondary antibody was diluted at 1:200(room temperature, 45min).