



NKAI1 rabbit pAb

Catalog No	BYab-11277
Isotype	IgG
Reactivity	Human; Mouse
Applications	WB
Gene Name	NKAIN1 FAM77C
Protein Name	NKAI1
Immunogen	Synthesized peptide derived from human NKAI1 AA range: 124-174
Specificity	This antibody detects endogenous levels of NKAI1 at Human/Mouse
Formulation	Liquid in PBS containing 50% glycerol, 0.5% BSA and 0.02% sodium azide.
Source	Polyclonal, Rabbit,IgG
Purification	The antibody was affinity-purified from rabbit serum by affinity-chromatography using specific immunogen.
Dilution	WB 1: 500-2000
Concentration	1 mg/ml
Purity	≥90%
Storage Stability	-20°C/1 year
Synonyms	
Observed Band	
Cell Pathway	Cell membrane ; Multi-pass membrane protein .
Tissue Specificity	
Function	similarity:Belongs to the NKAIN family.,subunit:Interacts with ATP1B1 C-terminus.,
Background	NKAIN1 is a member of a family of mammalian proteins with similarity to Drosophila Nkain and interacts with the beta subunit of Na,K-ATPase (ATP1B1; MIM 182330) (Gorokhova et al., 2007 [PubMed 17606467]).[supplied by OMIM, Jun 2009],
matters needing attention	Avoid repeated freezing and thawing!

Nanjing BYabscience technology Co.,Ltd

网址: www.njbybio.com

官方热线: 025-5229-8998

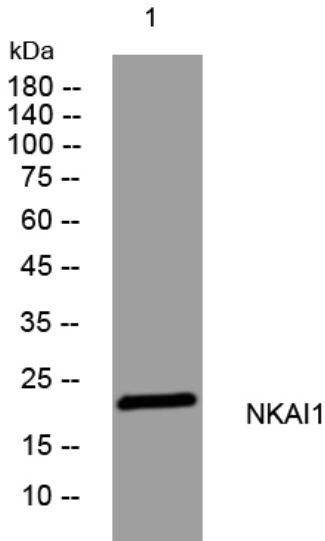
监督电话: 15950492658



Usage suggestions

This product can be used in immunological reaction related experiments. For more information, please consult technical personnel.

Products Images



Western blot analysis of lysates from Jarkat cells,
primary antibody was diluted at 1:1000, 4° over night