



# GALE rabbit pAb

Catalog No	BYab-11351
Isotype	IgG
Reactivity	Human; Mouse;Rat
Applications	WB
Gene Name	GALE
Protein Name	GALE
Immunogen	Synthesized peptide derived from human GALE AA range: 104-154
Specificity	This antibody detects endogenous levels of GALE at Human/Mouse/Rat
Formulation	Liquid in PBS containing 50% glycerol, 0.5% BSA and 0.02% sodium azide.
Source	Polyclonal, Rabbit,IgG
Purification	The antibody was affinity-purified from rabbit serum by affinity-chromatography using specific immunogen.
Dilution	WB 1: 500-2000
Concentration	1 mg/ml
Purity	≥90%
Storage Stability	-20°C/1 year
Synonyms	
Observed Band	
Cell Pathway	cytosol,extracellular exosome,
Tissue Specificity	
Function	<p>catalytic activity:UDP-glucose = UDP-galactose.,cofactor:NAD.,disease:Defects in GALE are the cause of epimerase-deficiency galactosemia (EDG) [MIM:230350]; also known as galactosemia type 3. Clinical features include early-onset cataracts, liver damage, deafness and mental retardation. There are two clinically distinct forms of EDG. (1) A benign, or 'peripheral' form with no detectable GALE activity in red blood cells and characterized by mild symptoms. Some patients may suffer no symptoms beyond raised levels of galactose-1-phosphate in the blood. (2) A much rarer 'generalized' form with undetectable levels of GALE activity in all tissues and resulting in severe features such as restricted growth and mental development.,function:Catalyzes two distinct but analogous reactions: the epimerization of UDP-glucose to UDP-galactose and the epimerization of UDP-N-acetylglucosamine to UDP-N-ace</p>

Nanjing BYabscience technology Co.,Ltd



## Background

This gene encodes UDP-galactose-4-epimerase which catalyzes two distinct but analogous reactions: the epimerization of UDP-glucose to UDP-galactose, and the epimerization of UDP-N-acetylglucosamine to UDP-N-acetylgalactosamine. The bifunctional nature of the enzyme has the important metabolic consequence that mutant cells (or individuals) are dependent not only on exogenous galactose, but also on exogenous N-acetylgalactosamine as a necessary precursor for the synthesis of glycoproteins and glycolipids. Mutations in this gene result in epimerase-deficiency galactosemia, also referred to as galactosemia type 3, a disease characterized by liver damage, early-onset cataracts, deafness and mental retardation, with symptoms ranging from mild ('peripheral' form) to severe ('generalized' form). Multiple alternatively spliced transcripts encoding the same protein have been identified. [provided by RefSeq, Jul 2008],

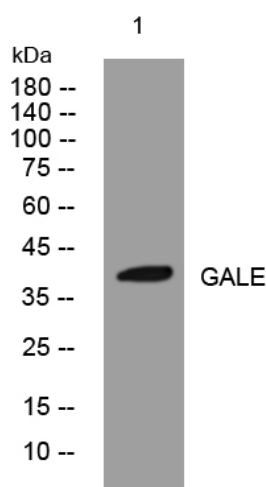
## matters needing attention

Avoid repeated freezing and thawing!

## Usage suggestions

This product can be used in immunological reaction related experiments. For more information, please consult technical personnel.

## Products Images



Western blot analysis of lysates from PC-12 cells, primary antibody was diluted at 1:1000, 4° over night