



# S38A8 rabbit pAb

<b>Catalog No</b>	BYab-11360
<b>Isotype</b>	IgG
<b>Reactivity</b>	Human; Mouse
<b>Applications</b>	WB
<b>Gene Name</b>	SLC38A8
<b>Protein Name</b>	S38A8
<b>Immunogen</b>	Synthesized peptide derived from human S38A8 AA range: 191-241
<b>Specificity</b>	This antibody detects endogenous levels of S38A8 at Human/Mouse
<b>Formulation</b>	Liquid in PBS containing 50% glycerol, 0.5% BSA and 0.02% sodium azide.
<b>Source</b>	Polyclonal, Rabbit,IgG
<b>Purification</b>	The antibody was affinity-purified from rabbit serum by affinity-chromatography using specific immunogen.
<b>Dilution</b>	WB 1: 500-2000
<b>Concentration</b>	1 mg/ml
<b>Purity</b>	≥90%
<b>Storage Stability</b>	-20°C/1 year
<b>Synonyms</b>	
<b>Observed Band</b>	
<b>Cell Pathway</b>	Membrane ; Multi-pass membrane protein .
<b>Tissue Specificity</b>	Expressed in fetal and adult brain, and spinal cord. In the brain, it is localized in the cell body and axon of the majority of neuronal cells and in a subset of glial cells. Found throughout the neuronal retina, with higher expression levels in the inner and outer plexiform layers and the photoreceptor layer. Very weak expression is also present in the kidneys, thymus, and testes.
<b>Function</b>	function:Putative sodium-dependent amino acid/proton antiporter.,similarity:Belongs to the amino acid/polyamine transporter 2 family.,
<b>Background</b>	This gene encodes a putative sodium-dependent amino-acid/proton antiporter. The protein has eleven transmembrane domains, an extracellular N-terminus and an intracellular C-terminal tail. The protein is a member of the SLC38 sodium-coupled neutral amino acid transporter family of proteins. Mutations in this gene result in foveal hypoplasia with or without optic nerve misrouting and/or anterior segment dysgenesis. [provided by RefSeq, May 2014],

**Nanjing BYabscience technology Co.,Ltd**



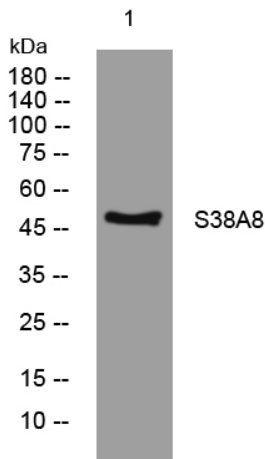
**matters needing attention**

Avoid repeated freezing and thawing!

**Usage suggestions**

This product can be used in immunological reaction related experiments. For more information, please consult technical personnel.

**Products Images**



Western blot analysis of lysates from Jarkat cells, primary antibody was diluted at 1:1000, 4° over night.