



FBX6 rabbit pAb

Catalog No	BYab-11366
Isotype	IgG
Reactivity	Human; Mouse;Rat
Applications	WB
Gene Name	FBXO6 FBG2 FBS2 FBX6
Protein Name	FBX6
Immunogen	Synthesized peptide derived from human FBX6 AA range: 30-80
Specificity	This antibody detects endogenous levels of FBX6 at Human/Mouse/Rat
Formulation	Liquid in PBS containing 50% glycerol, 0.5% BSA and 0.02% sodium azide.
Source	Polyclonal, Rabbit,IgG
Purification	The antibody was affinity-purified from rabbit serum by affinity-chromatography using specific immunogen.
Dilution	WB 1: 500-2000
Concentration	1 mg/ml
Purity	≥90%
Storage Stability	-20°C/1 year
Synonyms	
Observed Band	
Cell Pathway	Cytoplasm .
Tissue Specificity	
Function	function:Probably recognizes and binds to some phosphorylated proteins and promotes their ubiquitination and degradation.,online information:hFBG2,similarity:Contains 1 F-box domain.,similarity:Contains 1 FBA (F-box associated) domain.,subunit:Part of a SCF (SKP1-cullin-F-box) protein ligase complex.,
Background	This gene encodes a member of the F-box protein family which is characterized by an approximately 40 amino acid motif, the F-box. The F-box proteins constitute one of the four subunits of the ubiquitin protein ligase complex called SCFs (SKP1-cullin-F-box), which function in phosphorylation-dependent ubiquitination. The F-box proteins are divided into 3 classes: Fbws containing WD-40 domains, Fbls containing leucine-rich repeats, and Fbxs containing either different

Nanjing BYabs science technology Co.,Ltd



protein-protein interaction modules or no recognizable motifs. The protein encoded by this gene belongs to the Fbxs class, and its C-terminal region is highly similar to that of rat NFB42 (neural F Box 42 kDa) which may be involved in the control of the cell cycle. [provided by RefSeq, Jul 2008],

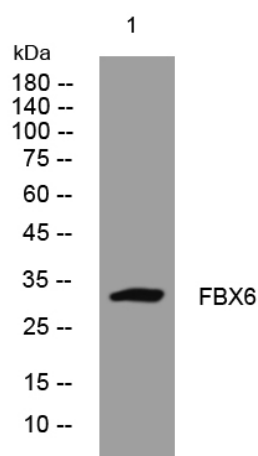
matters needing attention

Avoid repeated freezing and thawing!

Usage suggestions

This product can be used in immunological reaction related experiments. For more information, please consult technical personnel.

Products Images



Western blot analysis of lysates from VEC cells,
primary antibody was diluted at 1:1000, 4° over night