



ZBT25 rabbit pAb

Catalog No	BYab-11376
Isotype	IgG
Reactivity	Human;Rat;Mouse;
Applications	WB
Gene Name	ZBTB25 C14orf51 KUP ZNF46
Protein Name	ZBT25
Immunogen	Synthesized peptide derived from human ZBT25 AA range: 249-299
Specificity	This antibody detects endogenous levels of ZBT25 at Human
Formulation	Liquid in PBS containing 50% glycerol, 0.5% BSA and 0.02% sodium azide.
Source	Polyclonal, Rabbit,IgG
Purification	The antibody was affinity-purified from rabbit serum by affinity-chromatography using specific immunogen.
Dilution	WB 1: 500-2000
Concentration	1 mg/ml
Purity	≥90%
Storage Stability	-20°C/1 year
Synonyms	
Observed Band	
Cell Pathway	Nucleus.
Tissue Specificity	Expressed mainly in hematopoietic cells and testis.
Function	function:May be involved in transcriptional regulation.,similarity:Contains 1 BTB (POZ) domain.,similarity:Contains 2 C2H2-type zinc fingers.,tissue specificity:Expressed mainly in hematopoietic cells and testis.,
Background	
matters needing attention	Avoid repeated freezing and thawing!

Nanjing BYabscience technology Co.,Ltd

网址: www.njbybio.com

官方热线: 025-5229-8998

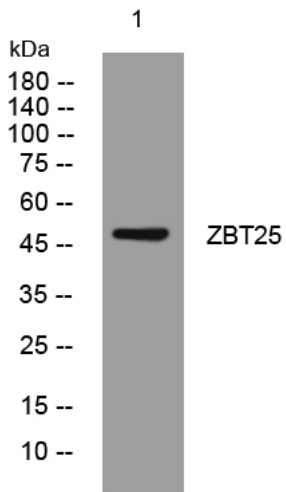
监督电话: 15950492658



Usage suggestions

This product can be used in immunological reaction related experiments. For more information, please consult technical personnel.

Products Images



Western blot analysis of lysates from U2OS cells, primary antibody was diluted at 1:1000, 4° over night