



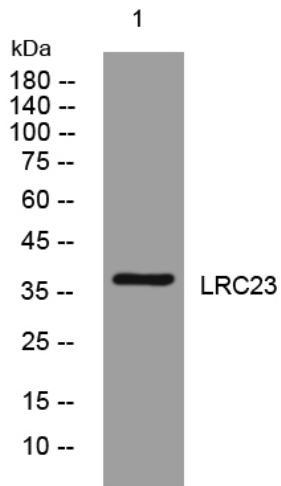
# LRC23 rabbit pAb

Catalog No	BYab-11377
Isotype	IgG
Reactivity	Human; Mouse
Applications	WB
Gene Name	LRRC23 LRPB7
Protein Name	LRC23
Immunogen	Synthesized peptide derived from human LRC23 AA range: 126-176
Specificity	This antibody detects endogenous levels of LRC23 at Human/Mouse
Formulation	Liquid in PBS containing 50% glycerol, 0.5% BSA and 0.02% sodium azide.
Source	Polyclonal, Rabbit,IgG
Purification	The antibody was affinity-purified from rabbit serum by affinity-chromatography using specific immunogen.
Dilution	WB 1: 500-2000
Concentration	1 mg/ml
Purity	≥90%
Storage Stability	-20°C/1 year
Synonyms	
Observed Band	
Cell Pathway	
Tissue Specificity	
Function	similarity:Contains 5 LRR (leucine-rich) repeats.,
Background	
matters needing attention	Avoid repeated freezing and thawing!
Usage suggestions	This product can be used in immunological reaction related experiments. For more information, please consult technical personnel.

Nanjing BYabscience technology Co.,Ltd



## Products Images



Western blot analysis of lysates from A549 cells,  
primary antibody was diluted at 1:1000, 4° over night