



# RT4I1 rabbit pAb

<b>Catalog No</b>	BYab-11385
<b>Isotype</b>	IgG
<b>Reactivity</b>	Human; Mouse
<b>Applications</b>	WB
<b>Gene Name</b>	RTN4IP1 NIMP
<b>Protein Name</b>	RT4I1
<b>Immunogen</b>	Synthesized peptide derived from human RT4I1 AA range: 282-332
<b>Specificity</b>	This antibody detects endogenous levels of RT4I1 at Human/Mouse
<b>Formulation</b>	Liquid in PBS containing 50% glycerol, 0.5% BSA and 0.02% sodium azide.
<b>Source</b>	Polyclonal, Rabbit,IgG
<b>Purification</b>	The antibody was affinity-purified from rabbit serum by affinity-chromatography using specific immunogen.
<b>Dilution</b>	WB 1: 500-2000
<b>Concentration</b>	1 mg/ml
<b>Purity</b>	≥90%
<b>Storage Stability</b>	-20°C/1 year
<b>Synonyms</b>	
<b>Observed Band</b>	
<b>Cell Pathway</b>	Mitochondrion outer membrane . Colocalizes with the endoplasmic reticulum HSPA5 at spots corresponding to contacts with mitochondria. .
<b>Tissue Specificity</b>	Widely expressed in mitochondria-enriched tissues. Found in heart, muscle, kidney, liver, brain and placenta.
<b>Function</b>	function:Appears to be a potent inhibitor of regeneration following spinal cord injury.,similarity:Belongs to the zinc-containing alcohol dehydrogenase family. Quinone oxidoreductase subfamily.,subunit:Interacts with RTN4, UQCRC1 and UQCRC2.,tissue specificity:Widely expressed in mitochondria-enriched tissues. Found in heart, muscle, kidney, liver, brain and placenta.,
<b>Background</b>	This gene encodes a mitochondrial protein that interacts with reticulon 4, which is a potent inhibitor of regeneration following spinal cord injury. This interaction may be important for reticulon-induced inhibition of neurite growth. Mutations in this gene can cause optic atrophy 10, with or without ataxia, mental retardation, and seizures. There is a pseudogene for this gene on chromosome 12. Alternative splicing results in multiple transcript variants. [provided by RefSeq, Jan 2016],

**Nanjing BYabs science technology Co.,Ltd**



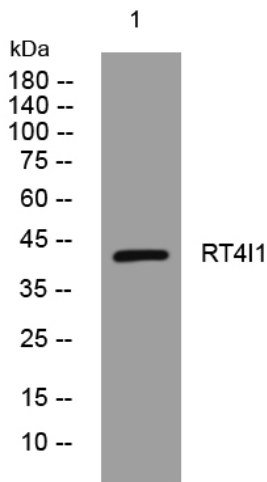
**matters needing attention**

Avoid repeated freezing and thawing!

**Usage suggestions**

This product can be used in immunological reaction related experiments. For more information, please consult technical personnel.

## Products Images



Western blot analysis of lysates from HpeG2 cells, primary antibody was diluted at 1:1000, 4° over night