



PATE4 rabbit pAb

Catalog No	BYab-11411
Isotype	IgG
Reactivity	Human; Mouse
Applications	IHC;IF
Gene Name	PATE4
Protein Name	PATE4
Immunogen	Synthesized peptide derived from human PATE4 AA range: 30-80
Specificity	This antibody detects endogenous levels of PATE4 at Human/Mouse
Formulation	Liquid in PBS containing 50% glycerol, 0.5% BSA and 0.02% sodium azide.
Source	Polyclonal, Rabbit,IgG
Purification	The antibody was affinity-purified from rabbit serum by affinity-chromatography using specific immunogen.
Dilution	IHC-p 1: 50-200. IF 1:50-200
Concentration	1 mg/ml
Purity	≥90%
Storage Stability	-20°C/1 year
Synonyms	
Observed Band	
Cell Pathway	Secreted . Cytoplasmic vesicle, secretory vesicle, acrosome .
Tissue Specificity	Specifically expressed in prostate, testis and spinal cord. Present in the acrosomal region of sperm cells. Present in apical epithelial cells of prostatic duct.
Function	function:May modulate the function of nicotinic acetylcholine receptors. May enhance sperm motility.,similarity:Belongs to the PATE family.,similarity:Contains 1 UPAR/Ly6 domain.,tissue specificity:Specifically expressed in prostate, testis and spinal cord. Present in the acrosomal region of sperm cells. Present in apical epithelial cells of prostatic duct.,
Background	
matters needing attention	Avoid repeated freezing and thawing!

Nanjing BYabscience technology Co.,Ltd

网址: www.njbybio.com

官方热线: 025-5229-8998

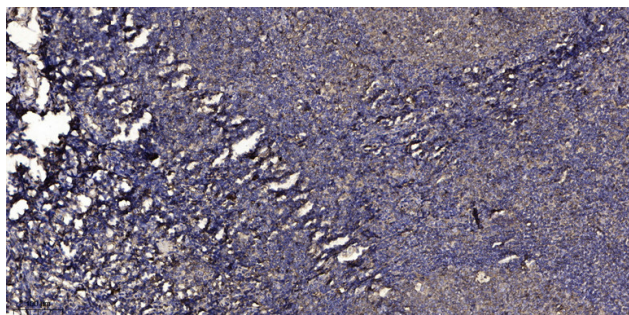
监督电话: 15950492658



Usage suggestions

This product can be used in immunological reaction related experiments. For more information, please consult technical personnel.

Products Images



Immunohistochemical analysis of paraffin-embedded human tonsil. 1, Antibody was diluted at 1:200(4° overnight). 2, Tris-EDTA,pH9.0 was used for antigen retrieval. 3,Secondary antibody was diluted at 1:200(room temperature, 30min).