



CRNL1 rabbit pAb

Catalog No	BYab-11440
Isotype	IgG
Reactivity	Human; Mouse;Rat
Applications	WB
Gene Name	CRNKL1 CRN CGI-201 MSTP021
Protein Name	CRNL1
Immunogen	Synthesized peptide derived from human CRNL1 AA range: 710-760
Specificity	This antibody detects endogenous levels of CRNL1 at Human/Mouse/Rat
Formulation	Liquid in PBS containing 50% glycerol, 0.5% BSA and 0.02% sodium azide.
Source	Polyclonal, Rabbit,IgG
Purification	The antibody was affinity-purified from rabbit serum by affinity-chromatography using specific immunogen.
Dilution	WB 1: 500-2000
Concentration	1 mg/ml
Purity	≥90%
Storage Stability	-20°C/1 year
Synonyms	
Observed Band	
Cell Pathway	Nucleus . Nucleus speckle . Colocalizes with core spliceosomal snRNP proteins (PubMed:12084575). .
Tissue Specificity	Widely expressed (PubMed:11342225). Highly expressed in testis (PubMed:12084575). Not detected in brain and lung (PubMed:12084575).
Function	function:Involved in pre-mRNA splicing process.,similarity:Belongs to the crooked-neck family.,similarity:Contains 17 HAT repeats.,subcellular location:Colocalizes with core spliceosomal snRNP proteins. Also diffusely expressed in cytoplasm.,subunit:Identified in the spliceosome C complex, at least composed of AQR, C19orf29, CDC40, CDC5L, CRNKL1, DDX23, DDX41, DDX48, DDX5, DGCR14, DHX35, DHX38, DHX8, EFTUD2, FRG1, GPATC1, HNRPA1, HNRPA2B1, HNRPA3, HNRPC, HNRPF, HNRPH1, HNRPK, HNRPM, HNRPR, HNRPU, KIAA1160, KIAA1604, LSM2, LSM3, MAGOH, MORG1, PABPC1, PLRG1, PNN, PPIE, PPIL1, PPIL3, PPWD1, PRPF19, PRPF4B, PRPF6, PRPF8, RALY, RBM22, RBM8A, RBMX, SART1, SF3A1, SF3A2, SF3A3, SF3B1, SF3B2, SF3B3, SFRS1, SKIV2L2, SNRNP200, SNRNP40,

Nanjing BYabscience technology Co.,Ltd



SNRPA1, SNRPB, SNRPB2, SNRPD1, SNRPD2, SNRPD3, SNRPE, SNRPF, SNRPG, SNW1, SRRM1, SRRM2, SYF2, SYNCRIP, TFIP11, THOC4, U2AF1, XAB2 and ZCCHC8. Present in a spliceosome

Background

The crooked neck (crn) gene of Drosophila is essential for embryogenesis and is thought to be involved in cell cycle progression and pre-mRNA splicing. A protein encoded by this human locus has been found to localize to pre-mRNA splicing complexes in the nucleus and is necessary for pre-mRNA splicing. Alternatively spliced transcript variants have been described. [provided by RefSeq, Jul 2013],

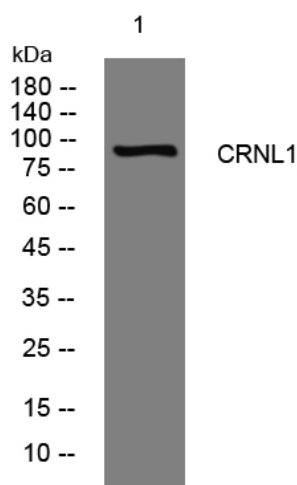
matters needing attention

Avoid repeated freezing and thawing!

Usage suggestions

This product can be used in immunological reaction related experiments. For more information, please consult technical personnel.

Products Images



Western blot analysis of lysates from A549 cells, primary antibody was diluted at 1:1000, 4° over night