



MTER3 rabbit pAb

Catalog No	BYab-11450
Isotype	IgG
Reactivity	Human; Mouse;Rat
Applications	WB;ELISA;IHC
Gene Name	MTERFD3
Protein Name	MTER3
Immunogen	Synthesized peptide derived from human MTER3 AA range: 238-288
Specificity	This antibody detects endogenous levels of MTER3 at Human/Mouse/Rat
Formulation	Liquid in PBS containing 50% glycerol, 0.5% BSA and 0.02% sodium azide.
Source	Polyclonal, Rabbit,IgG
Purification	The antibody was affinity-purified from rabbit serum by affinity-chromatography using specific immunogen.
Dilution	WB 1:500-2000;IHC-p 1:50-300; ELISA 2000-20000
Concentration	1 mg/ml
Purity	≥90%
Storage Stability	-20°C/1 year
Synonyms	
Observed Band	
Cell Pathway	Mitochondrion . Mitochondrion matrix, mitochondrion nucleoid .
Tissue Specificity	Expressed in skeletal muscle, heart, liver and pancreas.
Function	function:Involved in cell cycle regulation. May participate in the regulation of cell growth through the modulation of mitochondrial transcription. May act as a transcription termination factor.,similarity:Belongs to the mTERF family.,tissue specificity:Expressed in skeletal muscle, heart, liver and pancreas.,
Background	
matters needing attention	Avoid repeated freezing and thawing!

Nanjing BYabscience technology Co.,Ltd

网址: www.njbybio.com

官方热线: 025-5229-8998

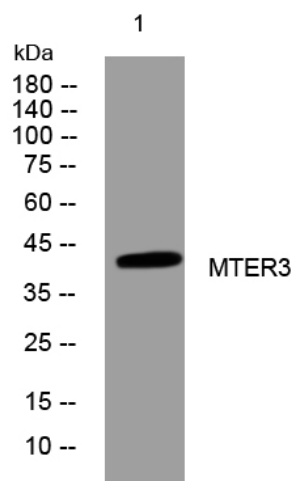
监督电话: 15950492658



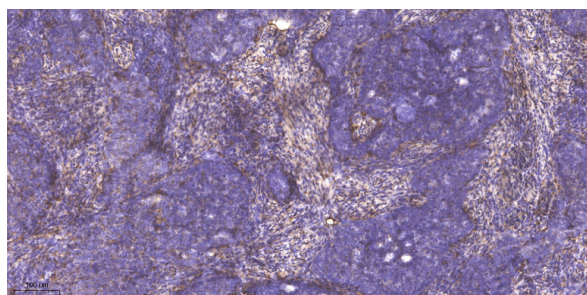
Usage suggestions

This product can be used in immunological reaction related experiments. For more information, please consult technical personnel.

Products Images



Western blot analysis of lysates from SH-SY5Y cells, primary antibody was diluted at 1:1000, 4° over night



Immunohistochemical analysis of paraffin-embedded human cervical carcinoma. 1, Antibody was diluted at 1:200(4° overnight). 2, Tris-EDTA,pH9.0 was used for antigen retrieval. 3,Secondary antibody was diluted at 1:200(room temperature, 45min).