



# SPRE2 rabbit pAb

<b>Catalog No</b>	BYab-11451
<b>Isotype</b>	IgG
<b>Reactivity</b>	Human; Mouse;Rat
<b>Applications</b>	WB;IHC
<b>Gene Name</b>	SPRED2
<b>Protein Name</b>	SPRE2
<b>Immunogen</b>	Synthesized peptide derived from human SPRE2 AA range: 68-118
<b>Specificity</b>	This antibody detects endogenous levels of SPRE2 at Human/Mouse/Rat
<b>Formulation</b>	Liquid in PBS containing 50% glycerol, 0.5% BSA and 0.02% sodium azide.
<b>Source</b>	Polyclonal, Rabbit,IgG
<b>Purification</b>	The antibody was affinity-purified from rabbit serum by affinity-chromatography using specific immunogen.
<b>Dilution</b>	WB 1:500-2000;IHC-p 1:50-300
<b>Concentration</b>	1 mg/ml
<b>Purity</b>	≥90%
<b>Storage Stability</b>	-20°C/1 year
<b>Synonyms</b>	
<b>Observed Band</b>	
<b>Cell Pathway</b>	Cell membrane ; Peripheral membrane protein ; Cytoplasmic side . Cytoplasmic vesicle, secretory vesicle membrane ; Peripheral membrane protein ; Cytoplasmic side . Cytoplasm . Detected in the cytoplasm of the stratum spinosum cells, where it is associated with cytoplasmic vesicles that are supposed to be secretory granules. .
<b>Tissue Specificity</b>	Expressed in liver, skin, small intestine, salivary gland and prostate.
<b>Function</b>	function:Tyrosine kinase substrate that inhibits growth-factor-mediated activation of MAP kinase.,PTM:Phosphorylated on tyrosine. Phosphorylation of Tyr-228 and Tyr-231 are required for ubiquitination.,PTM:Ubiquitinated; leading to degradation by the proteasome.,similarity:Contains 1 KBD domain.,similarity:Contains 1 SPR (sprouty) domain.,similarity:Contains 1 WH1 domain.,subcellular location:Especially found in the cytoplasm of the stratum spinosum cells called membrane-coated granules.,subunit:Interacts with Ras (By similarity). Homodimer and heterodimer. Able to interact with SPRED1 to form heterodimers.,tissue specificity:Expressed in liver, skin, small intestine, salivary

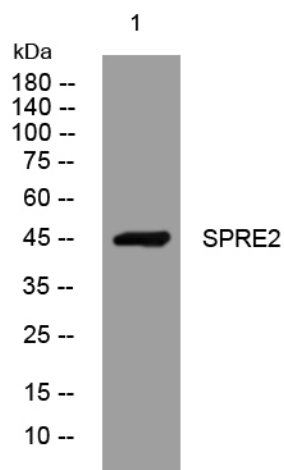
**Nanjing BYabscience technology Co.,Ltd**



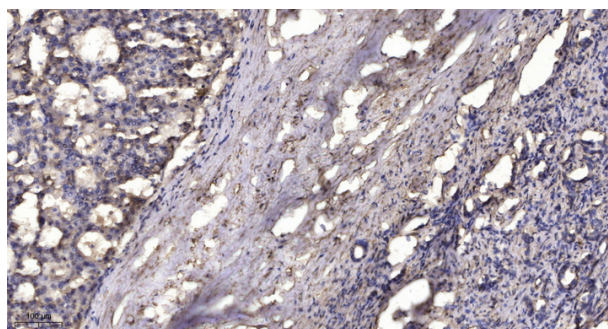
gland and prostate.,

<b>Background</b>	SPRED2 is a member of the Sprouty (see SPRY1; MIM 602465)/SPRED family of proteins that regulate growth factor-induced activation of the MAP kinase cascade (see MAPK1; MIM 176948) (Nonami et al., 2004 [PubMed 15465815]).[supplied by OMIM, Mar 2008],
<b>matters needing attention</b>	Avoid repeated freezing and thawing!
<b>Usage suggestions</b>	This product can be used in immunological reaction related experiments. For more information, please consult technical personnel.

## Products Images



Western blot analysis of lysates from KB cells, primary antibody was diluted at 1:1000, 4° over night



Immunohistochemical analysis of paraffin-embedded human liver cancer. 1, Antibody was diluted at 1:200(4° overnight). 2, Tris-EDTA, pH9.0 was used for antigen retrieval. 3, Secondary antibody was diluted at 1:200(room temperature, 45min).

Nanjing BYabs science technology Co.,Ltd

网址: [www.njbybio.com](http://www.njbybio.com)

官方热线: 025-5229-8998

监督电话: 15950492658