



ATL4 rabbit pAb

Catalog No	BYab-11466
Isotype	IgG
Reactivity	Human; Mouse;Rat
Applications	WB
Gene Name	ADAMTSL4 TSRC1 PP1396 UNQ2803/PRO34012
Protein Name	ATL4
Immunogen	Synthesized peptide derived from human ATL4 AA range: 78-128
Specificity	This antibody detects endogenous levels of ATL4 at Human/Mouse/Rat
Formulation	Liquid in PBS containing 50% glycerol, 0.5% BSA and 0.02% sodium azide.
Source	Polyclonal, Rabbit,IgG
Purification	The antibody was affinity-purified from rabbit serum by affinity-chromatography using specific immunogen.
Dilution	WB 1: 500-2000
Concentration	1 mg/ml
Purity	≥90%
Storage Stability	-20°C/1 year
Synonyms	
Observed Band	
Cell Pathway	Secreted, extracellular space, extracellular matrix . Colocalizes with FMN1 microfibrils in the eye ECM.
Tissue Specificity	Expressed in colon, heart, leukocyte, liver, lung, skeletal muscle, spleen, testis and placenta. Weaker expression in bone marrow, brain tissue, kidney and pancreas. Expression studies in fetal tissues reveal strong expression in heart, kidney, liver, lung and skeletal muscle, but weaker expression in fetal brain and skin.
Function	caution:Although similar to members of the ADAMTS family, it lacks the metalloprotease and disintegrin-like domains which are typical of that family.,function:Positive regulation of apoptosis.,similarity:Contains 1 PLAC domain.,similarity:Contains 6 TSP type-1 domains.,subunit:Interacts with CTSB.,
Background	This gene is a member of ADAMTS (a disintegrin and metalloproteinase with thrombospondin motifs)-like gene family and encodes a protein with seven thrombospondin type 1 repeats. The thrombospondin type 1 repeat domain is found in many proteins with diverse biological functions including cellular

Nanjing BYabscience technology Co.,Ltd



adhesion, angiogenesis, and patterning of the developing nervous system. Alternate transcriptional splice variants, encoding different isoforms, have been characterized. [provided by RefSeq, Sep 2014],

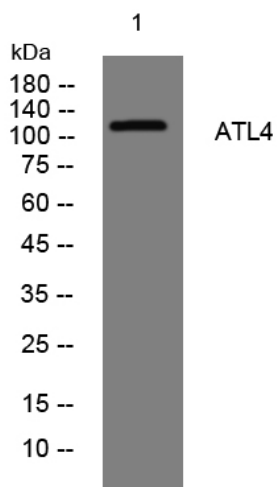
matters needing attention

Avoid repeated freezing and thawing!

Usage suggestions

This product can be used in immunological reaction related experiments. For more information, please consult technical personnel.

Products Images



Western blot analysis of lysates from PC-12 cells, primary antibody was diluted at 1:1000, 4° over night