



EI24 rabbit pAb

Catalog No	BYab-11471
Isotype	IgG
Reactivity	Human; Mouse;Rat
Applications	WB
Gene Name	EI24 PIG8
Protein Name	EI24
Immunogen	Synthesized peptide derived from human EI24 AA range: 107-157
Specificity	This antibody detects endogenous levels of EI24 at Human/Mouse/Rat
Formulation	Liquid in PBS containing 50% glycerol, 0.5% BSA and 0.02% sodium azide.
Source	Polyclonal, Rabbit,IgG
Purification	The antibody was affinity-purified from rabbit serum by affinity-chromatography using specific immunogen.
Dilution	WB 1: 500-2000
Concentration	1 mg/ml
Purity	≥90%
Storage Stability	-20°C/1 year
Synonyms	
Observed Band	
Cell Pathway	Nucleus membrane ; Multi-pass membrane protein . Cytoplasm . Endoplasmic reticulum membrane ; Multi-pass membrane protein .
Tissue Specificity	
Function	induction:By TP53/p53.,similarity:Belongs to the EI24 family.,
Background	This gene encodes a putative tumor suppressor and has higher expression in p53-expressing cells than in control cells and is an immediate-early induction target of p53-mediated apoptosis. The encoded protein may suppress cell growth by inducing apoptotic cell death through the caspase 9 and mitochondrial pathways. This gene is located on human chromosome 11q24, a region frequently altered in cancers. Alternative splicing results in multiple transcript variants. Pseudogenes of this gene have been defined on chromosomes 1, 3, 7, and 8. [provided by RefSeq, Feb 2014],

Nanjing BYabscience technology Co.,Ltd



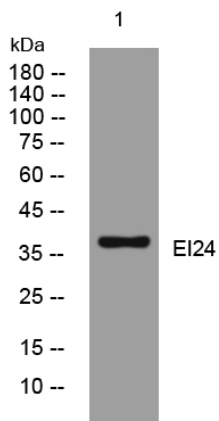
matters needing attention

Avoid repeated freezing and thawing!

Usage suggestions

This product can be used in immunological reaction related experiments. For more information, please consult technical personnel.

Products Images



Western blot analysis of lysates from KB cells, primary antibody was diluted at 1:1000, 4° over night