



# FRPD2 rabbit pAb

<b>Catalog No</b>	BYab-11495
<b>Isotype</b>	IgG
<b>Reactivity</b>	Human;Rat;Mouse;
<b>Applications</b>	WB
<b>Gene Name</b>	FRMPD2 PDZD5C PDZK4 PDZK5C
<b>Protein Name</b>	FRPD2
<b>Immunogen</b>	Synthesized peptide derived from human FRPD2 AA range: 1161-1211
<b>Specificity</b>	This antibody detects endogenous levels of FRPD2 at Human
<b>Formulation</b>	Liquid in PBS containing 50% glycerol, 0.5% BSA and 0.02% sodium azide.
<b>Source</b>	Polyclonal, Rabbit,IgG
<b>Purification</b>	The antibody was affinity-purified from rabbit serum by affinity-chromatography using specific immunogen.
<b>Dilution</b>	WB 1: 500-2000
<b>Concentration</b>	1 mg/ml
<b>Purity</b>	≥90%
<b>Storage Stability</b>	-20°C/1 year
<b>Synonyms</b>	
<b>Observed Band</b>	
<b>Cell Pathway</b>	Cytoplasm . Basolateral cell membrane . Cell junction, tight junction . Colocalizes with CTNNB1, CDH1 and PKP4 at the basolateral membrane. Colocalizes with TJP1 at tight junctions. Its recruitment to cell-cell contacts requires CDH1.
<b>Tissue Specificity</b>	Expressed in epithelial cells.
<b>Function</b>	caution:Could be the product of a pseudogene. This is the product of related genes or pseudogenes located in a region of chromosome 10q which contains a segmental duplication resulting in three nearly identical regions.,similarity:Contains 1 FERM domain.,similarity:Contains 1 KIND domain.,similarity:Contains 1 PDZ (DHR) domain.,similarity:Contains 2 PDZ (DHR) domains.,similarity:Contains 3 PDZ (DHR) domains.,
<b>Background</b>	This gene encodes a peripheral membrane protein and is located in a region of chromosome 10q that contains a segmental duplication. This copy of the gene is full-length and is in the telomeric duplicated region. Two other more centromerically proximal copies of the gene are partial and may represent

**Nanjing BYabscience technology Co.,Ltd**



pseudogenes. This full-length gene appears to function in the establishment and maintenance of cell polarization. The protein is recruited to cell-cell junctions in an E-cadherin-dependent manner, and is selectively localized at the basolateral membrane in polarized epithelial cells. Alternative splicing results in multiple transcript variants. [provided by RefSeq, Dec 2009],

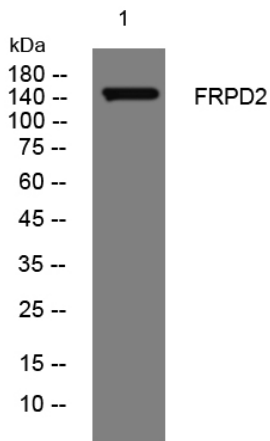
**matters needing attention**

Avoid repeated freezing and thawing!

**Usage suggestions**

This product can be used in immunological reaction related experiments. For more information, please consult technical personnel.

## Products Images



Western blot analysis of lysates from THP-1 cells, primary antibody was diluted at 1:1000, 4° over night