



# DMP4 rabbit pAb

<b>Catalog No</b>	BYab-11508
<b>Isotype</b>	IgG
<b>Reactivity</b>	Human; Mouse
<b>Applications</b>	WB
<b>Gene Name</b>	FAM20C DMP4
<b>Protein Name</b>	DMP4
<b>Immunogen</b>	Synthesized peptide derived from human DMP4 AA range: 328-378
<b>Specificity</b>	This antibody detects endogenous levels of DMP4 at Human/Mouse
<b>Formulation</b>	Liquid in PBS containing 50% glycerol, 0.5% BSA and 0.02% sodium azide.
<b>Source</b>	Polyclonal, Rabbit,IgG
<b>Purification</b>	The antibody was affinity-purified from rabbit serum by affinity-chromatography using specific immunogen.
<b>Dilution</b>	WB 1: 500-2000
<b>Concentration</b>	1 mg/ml
<b>Purity</b>	≥90%
<b>Storage Stability</b>	-20°C/1 year
<b>Synonyms</b>	
<b>Observed Band</b>	
<b>Cell Pathway</b>	Secreted . Golgi apparatus .
<b>Tissue Specificity</b>	Widely expressed.
<b>Function</b>	disease:Defects in FAM20C are the cause of Raine syndrome (RNS) [MIM:259775]. RNS is an autosomal recessive osteosclerotic bone dysplasia with neonatal lethal outcome. Clinical features include generalized osteosclerosis, craniofacial dysplasia and microcephaly.,function:Calcium-binding protein which may play a role in dentin mineralization.,similarity:Belongs to the FAM20 family.,tissue specificity:Widely expressed.,
<b>Background</b>	This gene encodes a member of the family of secreted protein kinases. The encoded protein binds calcium and phosphorylates proteins involved in bone mineralization. Mutations in this gene are associated with the autosomal recessive disorder Raine syndrome. [provided by RefSeq, Apr 2014],

**Nanjing BYabs science technology Co.,Ltd**

网址: [www.njbybio.com](http://www.njbybio.com)

官方热线: 025-5229-8998

监督电话: 15950492658



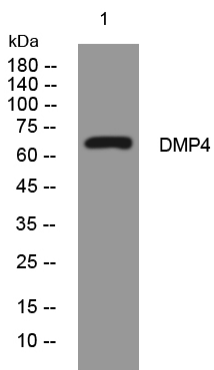
**matters needing attention**

Avoid repeated freezing and thawing!

**Usage suggestions**

This product can be used in immunological reaction related experiments. For more information, please consult technical personnel.

## Products Images



Western blot analysis of lysates from 293T cells, primary antibody was diluted at 1:1000, 4° over night