



# RPH3L rabbit pAb

<b>Catalog No</b>	BYab-11546
<b>Isotype</b>	IgG
<b>Reactivity</b>	Human; Mouse; Rat
<b>Applications</b>	WB
<b>Gene Name</b>	RPH3AL NOC2
<b>Protein Name</b>	RPH3L
<b>Immunogen</b>	Synthesized peptide derived from human RPH3L AA range: 162-212
<b>Specificity</b>	This antibody detects endogenous levels of RPH3L at Human/Mouse/Rat
<b>Formulation</b>	Liquid in PBS containing 50% glycerol, 0.5% BSA and 0.02% sodium azide.
<b>Source</b>	Polyclonal, Rabbit, IgG
<b>Purification</b>	The antibody was affinity-purified from rabbit serum by affinity-chromatography using specific immunogen.
<b>Dilution</b>	WB 1: 500-2000
<b>Concentration</b>	1 mg/ml
<b>Purity</b>	≥90%
<b>Storage Stability</b>	-20°C/1 year
<b>Synonyms</b>	
<b>Observed Band</b>	
<b>Cell Pathway</b>	Cytoplasm . Cytoplasmic vesicle, secretory vesicle membrane . Recruited to the vesicle membrane in a GTP- and RAB3B-dependent manner in epithelial cells.
<b>Tissue Specificity</b>	Moderate to high levels of expression in thyroid, ovary, stomach, heart, pancreas, skeletal muscle, kidney and liver. Also detected in epithelial cells.
<b>Function</b>	domain: The N-terminus of the RabBD domain is necessary and sufficient for interaction with RAB27A., function: Rab GTPase effector involved in the late steps of regulated exocytosis, both in endocrine and exocrine cells (By similarity). Acts as a potential RAB3B effector protein in epithelial cells., similarity: Contains 1 FYVE-type zinc finger., similarity: Contains 1 RabBD (Rab-binding) domain., subcellular location: Recruited to the vesicle membrane in a GTP- and RAB3B-dependent manner in epithelial cells., subunit: Recruited to dense-core vesicles through specific interaction with RAB27A in endocrine cells. Interacts with RAB3A, RAB3B, RAB3C and RAB3D. Interacts with ZYX., tissue specificity: Moderate to high levels of expression in thyroid, ovary, stomach, heart, pancreas, skeletal muscle, kidney and liver. Also detected in epithelial cells.,

**Nanjing BYabs science technology Co., Ltd**



## Background

The protein encoded by this gene plays a direct regulatory role in calcium-ion-dependent exocytosis in both endocrine and exocrine cells and plays a key role in insulin secretion by pancreatic cells. This gene is likely a tumor suppressor. Alternative splicing results in multiple transcript variants encoding distinct isoforms. [provided by RefSeq, Jun 2010],

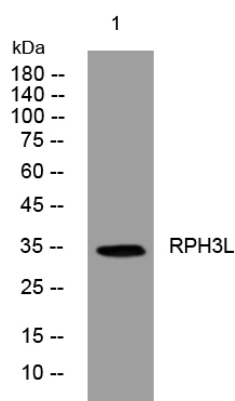
## matters needing attention

Avoid repeated freezing and thawing!

## Usage suggestions

This product can be used in immunological reaction related experiments. For more information, please consult technical personnel.

## Products Images



Western blot analysis of lysates from SW480 cells, primary antibody was diluted at 1:1000, 4° over night