



# AP4A rabbit pAb

Catalog No	BYab-11571
Isotype	IgG
Reactivity	Human; Mouse;Rat
Applications	WB
Gene Name	NUDT2 APAH1
Protein Name	AP4A
Immunogen	Synthesized peptide derived from human AP4A AA range: 93-143
Specificity	This antibody detects endogenous levels of AP4A at Human/Mouse/Rat
Formulation	Liquid in PBS containing 50% glycerol, 0.5% BSA and 0.02% sodium azide.
Source	Polyclonal, Rabbit,IgG
Purification	The antibody was affinity-purified from rabbit serum by affinity-chromatography using specific immunogen.
Dilution	WB 1: 500-2000
Concentration	1 mg/ml
Purity	≥90%
Storage Stability	-20°C/1 year
Synonyms	
Observed Band	
Cell Pathway	mitochondrial matrix,
Tissue Specificity	
Function	catalytic activity:P(1),P(4)-bis(5'-guanosyl) tetraphosphate + H(2)O = GTP + GMP.,cofactor:Divalent ions.,function:Asymmetrically hydrolyzes Ap4A to yield AMP and ATP. Plays a major role in maintaining homeostasis.,similarity:Belongs to the Nudix hydrolase family.,
Background	This gene encodes a member of the MutT family of nucleotide pyrophosphatases, a subset of the larger NUDIX hydrolase family. The gene product possesses a modification of the MutT sequence motif found in certain nucleotide pyrophosphatases. The enzyme asymmetrically hydrolyzes Ap4A to yield AMP and ATP and is responsible for maintaining the intracellular level of the dinucleotide Ap4A, the function of which has yet to be established. This gene may be a candidate tumor suppressor gene. Alternative splicing has been observed at

Nanjing BYabscience technology Co.,Ltd



this locus and four transcript variants, all encoding the same protein, have been identified. [provided by RefSeq, Sep 2011],

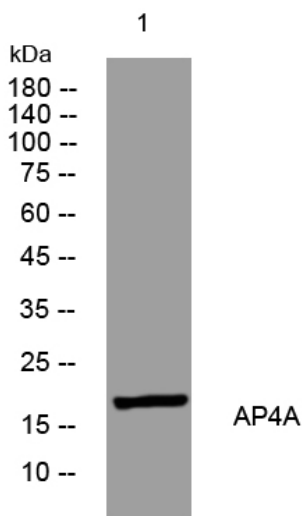
**matters needing attention**

Avoid repeated freezing and thawing!

**Usage suggestions**

This product can be used in immunological reaction related experiments. For more information, please consult technical personnel.

## Products Images



Western blot analysis of lysates from VEC cells, primary antibody was diluted at 1:1000, 4° over night