



# CMYA5 rabbit pAb

<b>Catalog No</b>	BYab-11591
<b>Isotype</b>	IgG
<b>Reactivity</b>	Human; Mouse
<b>Applications</b>	IHC;IF
<b>Gene Name</b>	CMYA5 C5orf10 DTNBP2 SPRYD2 TRIM76
<b>Protein Name</b>	CMYA5
<b>Immunogen</b>	Synthesized peptide derived from human CMYA5 AA range: 3866-3916
<b>Specificity</b>	This antibody detects endogenous levels of CMYA5 at Human/Mouse
<b>Formulation</b>	Liquid in PBS containing 50% glycerol, 0.5% BSA and 0.02% sodium azide.
<b>Source</b>	Polyclonal, Rabbit,IgG
<b>Purification</b>	The antibody was affinity-purified from rabbit serum by affinity-chromatography using specific immunogen.
<b>Dilution</b>	IHC-p 1: 50-200. IF 1:50-200
<b>Concentration</b>	1 mg/ml
<b>Purity</b>	≥90%
<b>Storage Stability</b>	-20°C/1 year
<b>Synonyms</b>	
<b>Observed Band</b>	
<b>Cell Pathway</b>	Nucleus . Sarcoplasmic reticulum . Cytoplasm . Cytoplasm, perinuclear region . Cytoplasm, myofibril, sarcomere, M line . Found predominantly at the periphery of the nucleus but also throughout the cell. Localized in lysosomes (By similarity). In skeletal muscles, localizes along myofiber periphery, at costameres (By similarity). Predominantly flanks Z-disks (By similarity). Occasionally present at the M-band level. Colocalized with RYR2 in the sarcoplasmic reticulum (By similarity). .
<b>Tissue Specificity</b>	Expressed in skeletal muscle; at a strong level and in heart.
<b>Function</b>	domain:Amphipathic helix regions act as an anchoring domain for PKA, and appear to be responsible of the interaction between myospryn and PRKAR2A.,induction:Down-regulated in muscle cell lines derived from patients with Duchenne muscular dystrophy (DMD).,sequence caution:Contaminating sequence. Potential poly-A sequence.,sequence caution:Translated as Trp.,similarity:Contains 1 B30.2/SPRY domain.,similarity:Contains 2 fibronectin type-III domains.,subcellular location:Found predominantly at the periphery of the

**Nanjing BYabscience technology Co.,Ltd**



nucleus but also throughout the cell. Localized at the Z-line costamere connection level of the sarcolemma and in lysosomes.,subunit:Interacts with ACTN2, DTNBP1/dysbindin and PRKAR2A (By similarity). Interacts with DES.,tissue specificity:Expressed in skeletal muscle; at a strong level and in heart.,

## Background

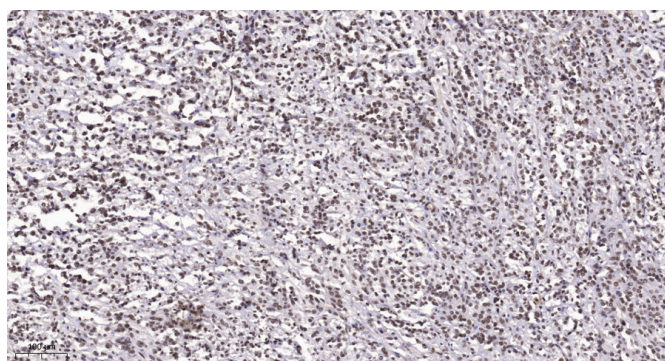
### matters needing attention

Avoid repeated freezing and thawing!

### Usage suggestions

This product can be used in immunological reaction related experiments. For more information, please consult technical personnel.

## Products Images



Immunohistochemical analysis of paraffin-embedded human Small intestinal stromal tumor. 1, Tris-EDTA,pH9.0 was used for antigen retrieval. 2 Antibody was diluted at 1:200(4° overnight.3,Secondary antibody was diluted at 1:200(room temperature, 45min).