



AQP7 rabbit pAb

Catalog No	BYab-11656
Isotype	IgG
Reactivity	Human; Mouse;Rat
Applications	WB
Gene Name	AQP7 AQP7L AQP9
Protein Name	AQP7
Immunogen	Synthesized peptide derived from human AQP7 AA range: 136-186
Specificity	This antibody detects endogenous levels of AQP7 at Human/Mouse/Rat
Formulation	Liquid in PBS containing 50% glycerol, 0.5% BSA and 0.02% sodium azide.
Source	Polyclonal, Rabbit,IgG
Purification	The antibody was affinity-purified from rabbit serum by affinity-chromatography using specific immunogen.
Dilution	WB 1: 500-2000
Concentration	1 mg/ml
Purity	≥90%
Storage Stability	-20°C/1 year
Synonyms	
Observed Band	
Cell Pathway	Cell membrane ; Multi-pass membrane protein . Cytoplasm, cell cortex . Cytoplasmic vesicle membrane ; Multi-pass membrane protein . Lipid droplet . Internalized from the cell membrane in response to catecholamine-induced activation of PKA; detected on intracellular membranes and colocalizes with lipid droplets (By similarity). Colocalizes with PLIN1 in adipocytes, probably on lipid droplets (PubMed:27832861). .
Tissue Specificity	Detected in the sperm head (at protein level) (PubMed:28042826). Detected in white adipose tissue (PubMed:9405233).
Function	domain:Aquaporins contain two tandem repeats each containing three membrane-spanning domains and a pore-forming loop with the signature motif Asn-Pro/Ala-Ala/Ser (NPA).,function:Forms a channel for water and glycerol.,similarity:Belongs to the MIP/aquaporin (TC 1.A.8) family.,
Background	This gene encodes a member of the aquaporin family of water-selective membrane channels. The encoded protein localizes to the plasma membrane and allows movement of water, glycerol and urea across cell membranes. This gene is

Nanjing BYabscience technology Co.,Ltd



highly expressed in the adipose tissue where the encoded protein facilitates efflux of glycerol. In the proximal straight tubules of kidney, the encoded protein is localized to the apical membrane and prevents excretion of glycerol into urine. The encoded protein is present in spermatids, as well as in the testicular and epididymal spermatozoa suggesting an important role in late spermatogenesis. Alternative splicing of this gene results in multiple transcript variants encoding different isoforms. This gene is located adjacent to a related aquaporin gene on chromosome 9. Multiple pseudogenes of this gene have been identified. [provided by RefSeq, Dec 2015],

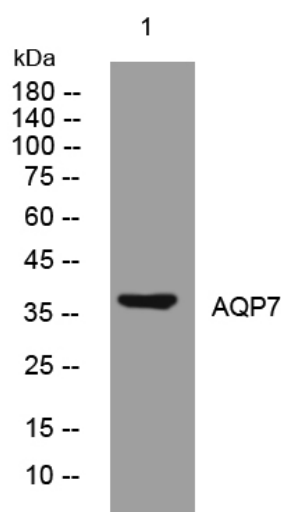
matters needing attention

Avoid repeated freezing and thawing!

Usage suggestions

This product can be used in immunological reaction related experiments. For more information, please consult technical personnel.

Products Images



Western blot analysis of lysates from MCF-7 cells, primary antibody was diluted at 1:1000, 4° over night